

michael miller FABRICS

COCO STAR QUILT

SIZE 43 1/2" W X 60" H / LEVEL CONFIDENT BEGINNER / PATTERN BY ROB APPELL



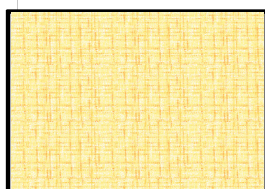
PLEASE NOTE: BEFORE BEGINNING YOUR PROJECT, CHECK FOR ANY PATTERN UPDATES AT MICHAELMILLERFABRICS.COM'S FREE PROJECTS SECTION.

p.212.704.0774 | info@michaelmillerfabrics.com | www.michaelmillerfabrics.com

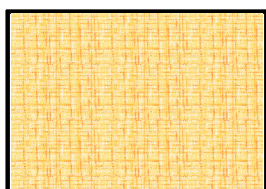


COCO STAR QUILT

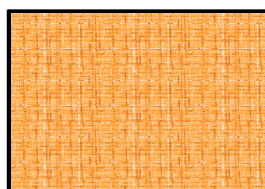
A



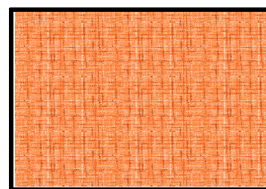
**CX9316 COCO
LEMON**
1/8 YD or
FAT QUARTER
VALUE 1



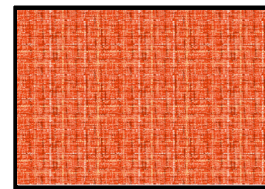
**CX9316 COCO
MARIGOLD**
10" X 10" or
FAT QUARTER
VALUE 2



**CX9316 COCO
MARMALADE**
1/8 YD or
FAT QUARTER
VALUE 3

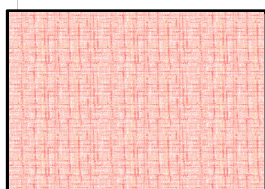


**CX9316 COCO
TANGERINE**
10" X 10" or
FAT QUARTER
VALUE 4

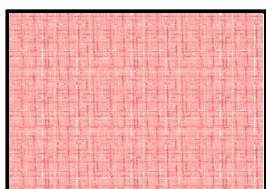


**CX9316 COCO
ORANGE**
1/8 YD or
FAT QUARTER
VALUE 5

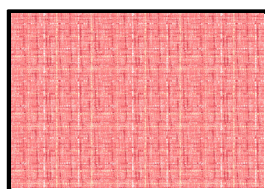
B



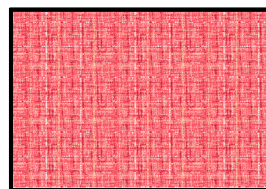
**CX9316 COCO
PEACH**
1/8 YD or
FAT QUARTER
VALUE 1



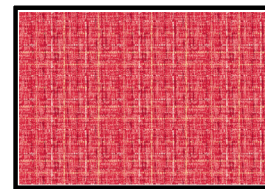
**CX9316 COCO
APRICOT**
10" X 10" or
FAT QUARTER
VALUE 2



**CX9316 COCO
CORAL**
1/8 YD or
FAT QUARTER
VALUE 3

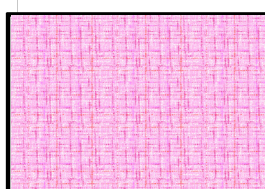


**CX9316 COCO
ROSE**
10" X 10" or
FAT QUARTER
VALUE 4

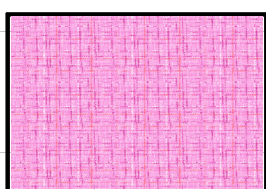


**CX9316 COCO
RASPBERRY**
1/8 YD or
FAT QUARTER
VALUE 5

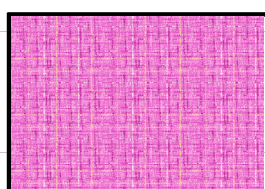
C



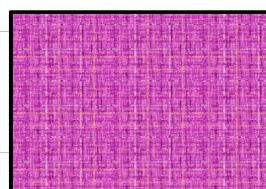
**CX9316 COCO
BLUSH**
1/8 YD or
FAT QUARTER
VALUE 1



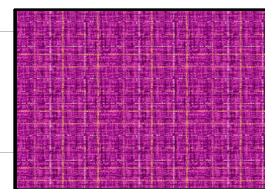
**CX9316 COCO
PINK**
10" X 10" or
FAT QUARTER
VALUE 2



**CX9316 COCO
BUBBLEGUM**
1/8 YD or
FAT QUARTER
VALUE 3

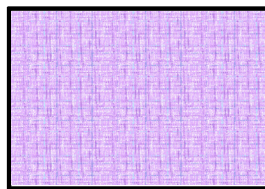


**CX9316 COCO
FUSCHIA**
10" X 10" or
FAT QUARTER
VALUE 4

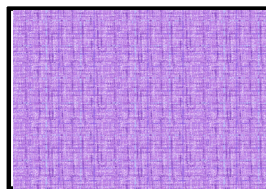


**CX9316 COCO
MAGENTA**
1/8 YD or
FAT QUARTER
VALUE 5

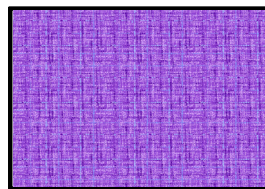
D



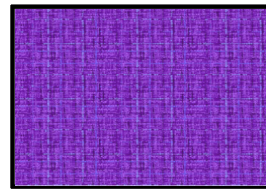
**CX9316 COCO
LAVENDAR**
1/8 YD or
FAT QUARTER
VALUE 1



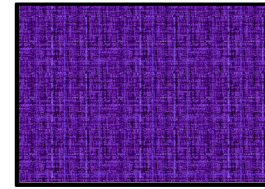
**CX9316 COCO
IRIS**
10" X 10" or
FAT QUARTER
VALUE 2



**CX9316 COCO
VIOLET**
1/8 YD or
FAT QUARTER
VALUE 3



**CX9316 COCO
PURPLE**
10" X 10" or
FAT QUARTER
VALUE 4

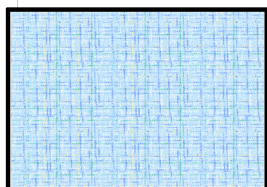


**CX9316 COCO
EGGPLANT**
1/8 YD or
FAT QUARTER
VALUE 5

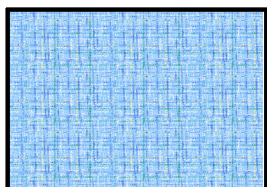


COCO STAR QUILT

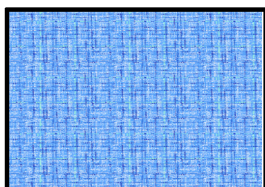
E



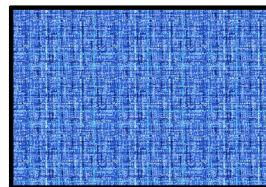
**CX9316 COCO
SKY**
1/8 YD or
FAT QUARTER
VALUE 1



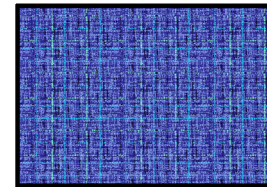
**CX9316 COCO
OCEAN**
10" X 10" or
FAT QUARTER
VALUE 2



**CX9316 COCO
CORNFLOWER**
1/8 YD or
FAT QUARTER
VALUE 3

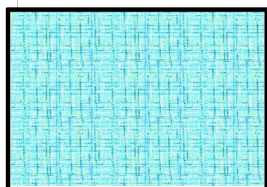


**CX9316 COCO
COBALT**
10" X 10" or
FAT QUARTER
VALUE 4

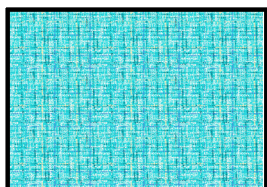


**CX9316 COCO
AZURE**
1/8 YD or
FAT QUARTER
VALUE 5

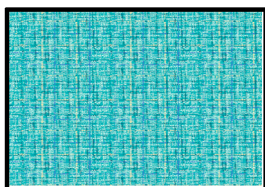
F



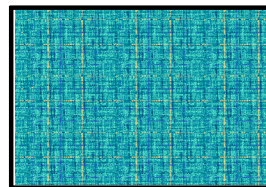
**CX9316 COCO
AQUA**
1/8 YD or
FAT QUARTER
VALUE 1



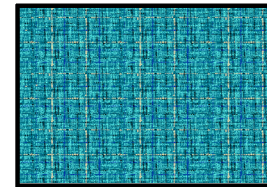
**CX9316 COCO
BREEZE**
10" X 10" or
FAT QUARTER
VALUE 2



**CX9316 COCO
TURQUOISE**
1/8 YD or
FAT QUARTER
VALUE 3

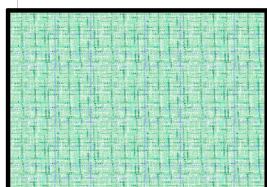


**CX9316 COCO
CARIBBEAN**
10" X 10" or
FAT QUARTER
VALUE 4

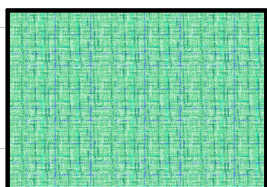


**CX9316 COCO
PEACOCK**
1/8 YD or
FAT QUARTER
VALUE 5

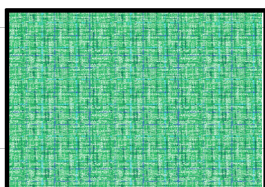
G



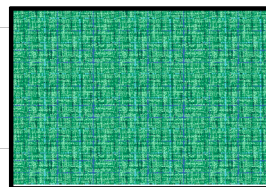
**CX9316 COCO
MINT**
1/8 YD or
FAT QUARTER
VALUE 1



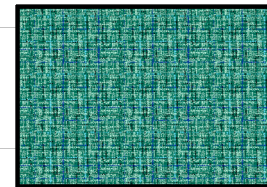
**CX9316 COCO
SEAFOAM**
10" X 10" or
FAT QUARTER
VALUE 2



**CX9316 COCO
JADE**
1/8 YD or
FAT QUARTER
VALUE 3

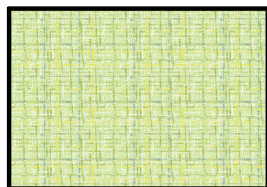


**CX9316 COCO
TEAL**
10" X 10" or
FAT QUARTER
VALUE 4

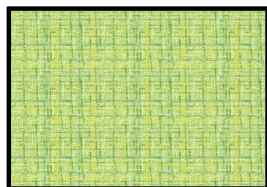


**CX9316 COCO
PINE**
1/8 YD or
FAT QUARTER
VALUE 5

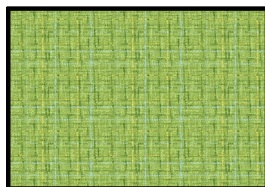
H



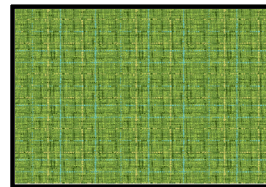
**CX9316 COCO
LIME**
1/8 YD or
FAT QUARTER
VALUE 1



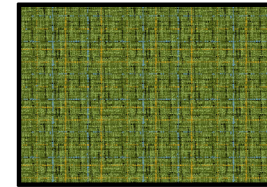
**CX9316 COCO
PEAR**
10" X 10" or
FAT QUARTER
VALUE 2



**CX9316 COCO
PISTACHIO**
1/8 YD or
FAT QUARTER
VALUE 3

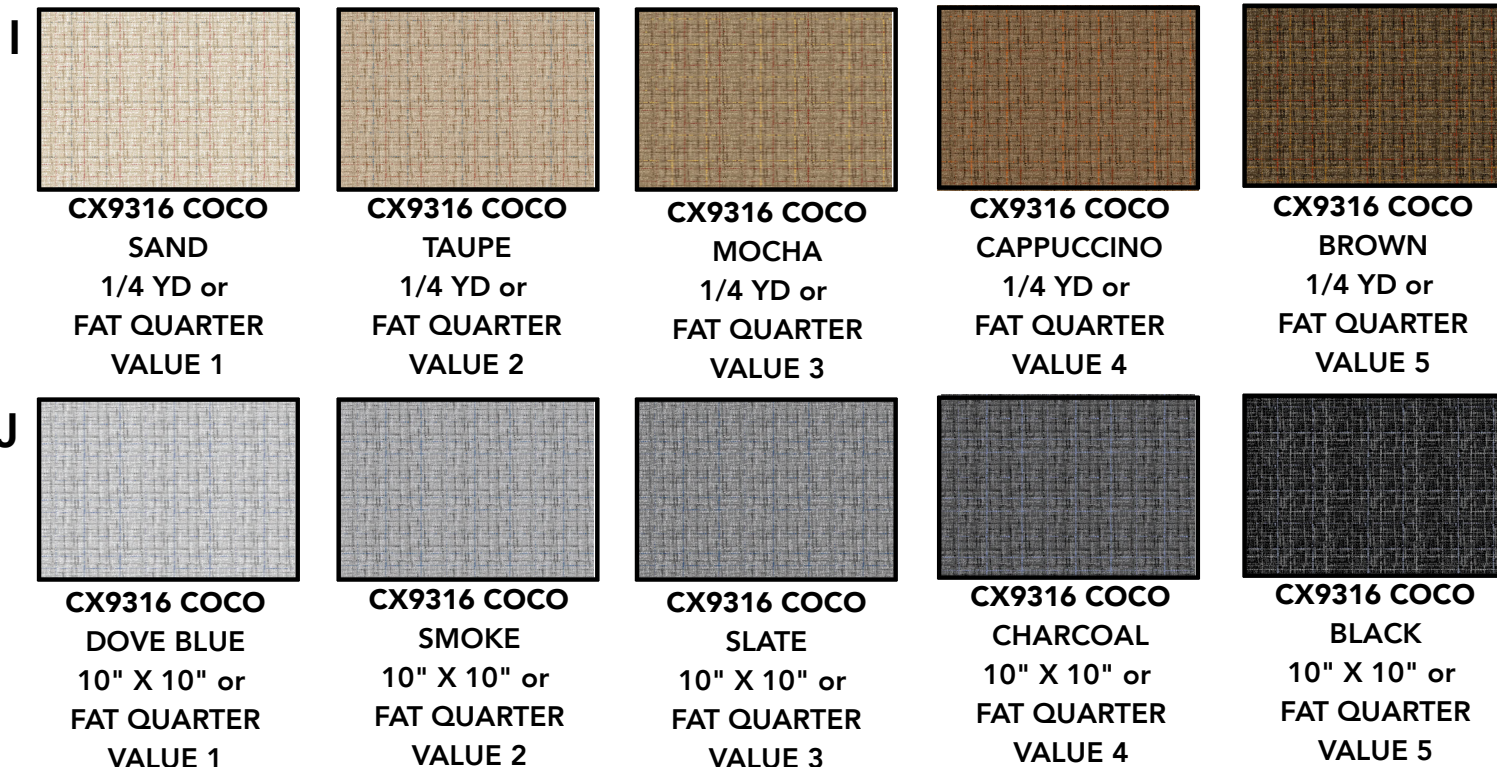


**CX9316 COCO
ASPARAGUS**
10" X 10" or
FAT QUARTER
VALUE 4

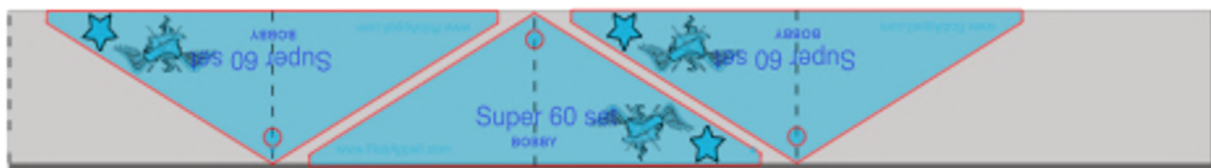


**CX9316 COCO
BASIL**
1/8 YD or
FAT QUARTER
VALUE 5

COCO STAR QUILT



GROUP	VALUE NUMBERS	CUTTING INSTRUCTIONS
A, B, C, D, E, F, G, H	1, 3, 5	CUT TWO STRIPS FROM EACH FABRIC THAT MEASURE 3-1/4" X 22". STACKING NO MORE THAN SIX STRIPS AT A TIME CUT THREE BOBBY TEMPLATE SHAPES AS SHOWN IN THE DIAGRAM BELOW. REMEMBER TO CUT OFF THE TWO CORNER TIPS.
A, B, C, D, E, F, G, H	2, 4	CUT TWO 8-1/2" 60 DEGREE TRIANGLES FROM EACH COLOR. FROM GROUPS A,D,E, AND H - CUT ONE OF EACH 60 DEGREE TRIANGLE IN HALF TOP TO BOTTOM
J	1, 2	CUT TWO 8-1/2" 60 DEGREE TRIANGLES FROM EACH FABRIC, THEN CUT THE TRIANGLES IN HALF TOP TO BOTTOM
I	1, 2, 3, 4, 5	CUT TWO 2-1/2" X 22" STRIPS
J	3, 4, 5	CUT TWO 2-1/2" X 22" STRIPS





COCO STAR QUILT

ASSEMBLING THE BOBBY TRIANGLES

THE BOBBY TEMPLATES ARE EASY TO STITCH TOGETHER. SIMPLY START TWO BOBBY SHAPED FABRICS, RIGHTS SIDES TOGETHER (RST) AND SEW A 1/4" SEAM ALONG ONE OF THE SHORT SIDES. DIAGRAM A

PRESS SEAM TO ONE SIDE

ADD YOUR THIRD BOBBY SHAPED FABRIC, RST, SEWING ALONG TWO SHORT SIDES LIKE BEFORE. WHEN THE NEEDLE HITS THE THREADS OF THE FIRST SEAM PIVOT WITH YOUR NEEDLE DOWN, AND CONTINUE ALONG THE OTHER TWO SHORT SIDES. DIAGRAM B



ASSEMBLING THE ROWS

THE COCO STAR QUILT IS BUILT IN HORIZONTAL ROWS OR TRIANGLES IN ALTERNATING ORIENTATION. THE ENTIRE QUILT SHOULD BE LAID OUT PRIOR TO SEWING THE TRIANGLES TOGETHER INTO THE ROWS.

START WITH THREE BOBBY TRIANGLES AND LAY THEM SO THAT THE VALUES 1 AND 5 ARE TOUCHING AND VALUE 3 IS FORMING THE OUTSIDE OF THE STAR.

THE SPACE BETWEEN STARS WILL BE THE FULL 8-1/2" 60 DEGREE TRIANGLES FORM VALUES 2 AND 4 FROM THE SAME FABRIC GROUP.

THE END OF EACH ROW IS FILLED IN WITH THE HALF PIECES OF THE FULL 8-1/2" 60 DEGREE TRIANGLES FROM THE GROUP J FABIRCS VALUES 1 AND 2. DIAGRAM C



C

BINDING STRIPS

USING THE 2-1/2" X 22" STRIPS FROM FABRIC GROUPS I AND J PREPARE YOUR BINDING. LAYOUT YOUR COLORS FROM LIGHTEST TO DARKEST BACK TO LIGHTEST AS YOU SEW THE SHORT ENDS TOGETHER WITH A BIAS JOINING SEAM. PRESS IN HALF LONG WISE TO BE READY TO FINISH THE QUILT.

COCO STAR QUILT

LAYOUT FOR ENTIRE QUILT ASSEMBLY

