

Kimono

designed by Hilary Gooding for makoweruk using the Kimono Collection
Finished size 37" x 37" (94cms x 94cms)



makoweruk
118 Grey's Road, Henley on Thames, Oxon RG9 1QW
www.makoweruk.com Email: info@makoweruk.com



www.andoverfabrics.com

Kimono

Designed by Hilary Gooding

Size: 37" (94cm) square

Fabric	Quantity	First Cut	Second Cut	Position
Black Cherry Blossom 838/X	57 x 25cm	Cut a 4¼" wide strip	Cut two pieces 3½" x 4¼" (A) Cut two pieces 2" x 2" (L) Cut four sleeve templates*	Kimonos
		Cut a 1½" wide strip	Cut two pieces 6½" x 1½" (G)	
Cream Cherry Blossom 838/Q	FQ (57 x 50cm)	Cut a 3½" wide strip	Cut three pieces 3½" x 4¼" (A) Cut four 1¾" squares	Kimonos, Centres in Outer Corner Posts, Collars
		Cut a 1½" wide strip	Cut three pieces 6½" x 1½" (G)	
		Cut a 4" wide strip	Cut six sleeve templates*	
		Cut a 2" wide strip	Cut two 2" squares (L)	
Black Parasol 840/X	57 x 25cm	Cut a 3½" wide strip	Cut two pieces 3½" x 4¼" (A) Cut two 2" squares (L)	Kimonos, Collars
		Cut a 1½" wide strip	Cut two pieces 6½" x 1½" (G)	
		Cut a 4" wide strip	Cut four sleeve templates*	
Green Parasol 840/G	57 x 25cm	Cut a 3½" wide strip	Cut two pieces 3½" x 4¼" (A) Cut two pieces 6½" x 1½" (G)	Kimonos
		Cut a 4" wide strip	Cut four sleeve templates*	
Black Spraytime 2800/X01	60 x 115cm	Cut five 1½" wide strips		Binding
		Cut two 1½" wide strips	Cut two pieces 28¾" long Cut eight 1½" x 1¾" pieces Cut one 1½" x 3¾" piece	Middle Border, Corner Blocks
		Cut two 1½" wide strips	Cut two pieces 30¾" long Cut four 1½" x 3¾" pieces	Middle Border, Corner Blocks
		Cut two 1½" wide strips	Cut two 18½" x 1½" pieces Cut four 8½" x 1½" pieces Cut one 1½" x 3¾" piece	Sashing, Corner block
		Cut a 1½" wide strip	Cut two 1½" x 3¾" pieces Cut four 6" x 1½" pieces (H) Cut two 3½" x ¾" pieces (C)	Corner posts, Background, Obi Ties
		Cut a 3¼" wide strip	Cut four sleeve templates* Cut two 8½" x 1¾" pieces (K) Cut two 8½" x 1¼" pieces (J) Cut four 2" x 2½" pieces (F) Cut six 3½" x ¾" pieces (C)	Background, Obi Ties
Maroon Spraytime 2800/R48	FQ (57 x 50cm)	Cut a 1½" wide strip	Cut three 6½" x 1½" pieces (H)	Background
		Cut a 1½" wide strip	Cut two 8½" x 1½" pieces	Sashing
		Cut a 1½" wide strip	Cut one 6½" x 1½" pieces (H) Cut two 3½" x 1" pieces	Background, Obis
		Cut a 1¾" wide strip	Cut two 8½" x 1¾" pieces (K)	Background
		Cut a 1¼" wide strip	Cut two 8½" x 1¼" pieces (J)	Background
		Cut a 4" wide strip	Cut four sleeve templates* Cut four 2" x 2½" pieces (F)	Background

Fabric	Quantity	First Cut	Second Cut	Position
Yellow Kimono Ditsy 843/Y	FQ (57 x 50cm)	Cut three 1½" wide strips	Cut two 8½" x 1½" pieces Cut four 6½" x 1½" pieces (H)	Sashing, Background
		Cut a 1¾" wide strip	Cut two 8½" x 1¾" pieces (K) Cut one 1⅝" square	Obis, Inner Corner Post
		Cut a 1¼" wide strip	Cut two 8½" x 1¼" pieces (J)	Background
		Cut a 2" wide strip	Cut four 2" x 2½" pieces (F) Cut two 2" squares (L) Cut two 1⅝" squares	Background, Collar, Inner Corner Posts
		Cut a 3¼" wide strip	Cut four sleeve templates* Cut six 3½" x 1" pieces (B)	Background, Obis
Red Kimono Ditsy 843/R6	57 x 25cm	Cut a 1¾" wide strip	Cut two 8½" x 1¾" pieces (K)	Background
		Cut a 1½" wide strip	Cut three 6½" x 1½" pieces (H)	Background
		Cut a 1½" wide strip	Cut one 6½" x 1½" piece (H) Cut one 8½" x 1¼" piece (J) Cut one 3½" x 1" piece (B)	Background, Obi
		Cut a 3¼" wide strip	Cut four sleeve templates* Cut one 8½" x 1¼" piece (J) Cut four 2" x 2½" pieces (F) Cut one 3½" x 1" piece (B)	Background, Obi
Orange Kimono Ditsy 843/N	57 x 25cm	Cut a 1½" wide strip	Cut two 6½" x 1½" pieces (H)	Background
		Cut a 1¾" wide strip	Cut one 8½" x 1¾" piece (K) Cut one 8½" x 1¼" piece (J) Cut one 1⅝" square	Background, Inner Corner Post
		Cut a 2" wide strip	Cut one 2" square (L) Cut six 3½" x 1" pieces (B)	Collar, Obis
		Cut two sleeve templates* from remainder		Background
Kimono Border 836	90 x 115cm	Cut the four flower strips 1⅝" wide	Cut the strip 26½" long	Inner Border
		Cut four lantern strips 3¾" wide	Cut the strips 30¾" long	Outer Border
Kimono Mini Squares 839	1 metre			Backing

* Use the template given with this pattern. Make sure that with each pair you cut, one piece is a mirror image of the other. This applies to the sleeve as well as the background fabrics. Example: "Cut four sleeve templates*" in the table above means two left and two right sleeve pieces - two mirrored pairs. The sleeve and background pieces are sewn together using the foundation piecing patterns included in the pattern.

SEWING INSTRUCTIONS

All seams are ¼"

Kimono Block (See the Block Plan on page 5)

1. First print out enough sheets of foundation piecing patterns to complete your quilt - 9 blocks. If you can get hold of old fashioned typist's copy paper this ideal. Note the information given above *.
2. Sew the foundation pieced sleeves. Trim away the excess paper and fabric along the dotted line. Remove the paper being careful not to distort the fabric.
3. Sew the three pieces of the Obi together - two (B) pieces either side of the (C) piece. Always press the seams to one side after each seam is sewn.
4. Sew the Obi to the top of the Kimono piece (A).
5. Sew an F background piece to the bottom of a pair of sleeve units (Step 2).
6. Sew the sleeve units to the Kimono/Obi unit making sure the sleeves are facing the right way.
7. Sew the Kimono Shoulder piece (G) to the top of this unit (Step 6).

8. Now sew the two background pieces (H) either side of the unit.
9. Take the small collar square (L) and fold in half diagonally twice. Place the triangle in the centre of the Kimono unit with the raw edges lined up with the top edge. Pin in place and baste.
10. Sew the background piece (K) to the top of the Kimono unit and the (J) piece to the bottom. Press the block so that the collar points up.

Summary of Blocks

	Block	Background	Kimono	Obi	Collar
Top Row	Block 1	Black Spraytime	Cream Cherry Blossom	Yellow Ditsy/Red Ditsy	Yellow Ditsy
	Block 2	Red Ditsy	Black Cherry Blossom	Yellow Ditsy/Black Spraytime	Black Cherry Blossom
	Block 3	Maroon Spraytime	Green Parasol	Yellow Ditsy/Black Spraytime	Yellow Ditsy
Middle Row	Block 4	Yellow Ditsy	Black Cherry Blossom	Red Ditsy/Black Spraytime	Black Cherry Blossom
	Block 5	Orange Ditsy	Cream Cherry Blossom	Maroon Spraytime/Black Spraytime	Cream Cherry Blossom
	Block 6	Yellow Ditsy	Black Parasol	Maroon Spraytime/Black Spraytime	Black Parasol
Bottom Row	Block 7	Red Ditsy	Cream Cherry Blossom	Orange Ditsy/Black Spraytime	Cream Cherry Blossom
	Block 8	Maroon Spraytime	Black Parasol	Orange Ditsy/Black Spraytime	Black Parasol
	Block 9	Black Spraytime	Green Parasol	Orange Ditsy/Black Spraytime	Orange Ditsy

Assembling the Quilt Top

Lay out the Kimono Blocks in their correct order.

Sashing

1. Sew a Yellow Ditsy sashing between Blocks 1 and 2 and a Black Spraytime sashing between Blocks 2 and 3.
2. Sew Black Spraytime sashings between Blocks 4 and 5 and 6.
3. Sew a Black Spraytime sashing between Blocks 7 and 8 and a Yellow Ditsy sashing between Blocks 8 and 9.
4. Sew a Maroon sashing piece to one of the longer Black Spraytime sashing pieces. Repeat with the two remaining sashing pieces.
5. Sew the rows together with the sashings strips. Check that the Maroon Spraytime strips are in the right places. Press the seams under the sashings.

Inner Border

1. Sew a Flower Inner Border strip to the top and bottom of the quilt top.
2. Take the two remaining Flower Inner Border strips and sew a Yellow Ditsy Post each end of one strip and a Yellow and Orange Ditsy Post to each end of the second strip. Sew these strips to the left and right of the quilt top.

Middle Border

1. Sew the two 28¾" Black Spraytime strips to the top and bottom of the quilt top.
2. Sew the two 30¾" strips to the sides of the top. Press the seams under the border strips.

Outer Corner Posts

1. Sew two 1¼" x 1½" Black Spraytime pieces either side of a 1¾" Cream Cherry Blossom square. Then add two 3¾" x 1½" Black Spraytime pieces to the other sides. Press the seams away from the centre. Repeat for the other three Posts.
2. Sew one of these Corner Posts to each end of two of the Lantern Outer Border strips.

Outer Border

1. Sew two Lantern Outer Border strips to the top and bottom of the quilt top. Press the seams under the middle border.
2. Sew the two Lantern Outer Border strips with the corner posts to the sides of the quilt top.

Finishing the quilt

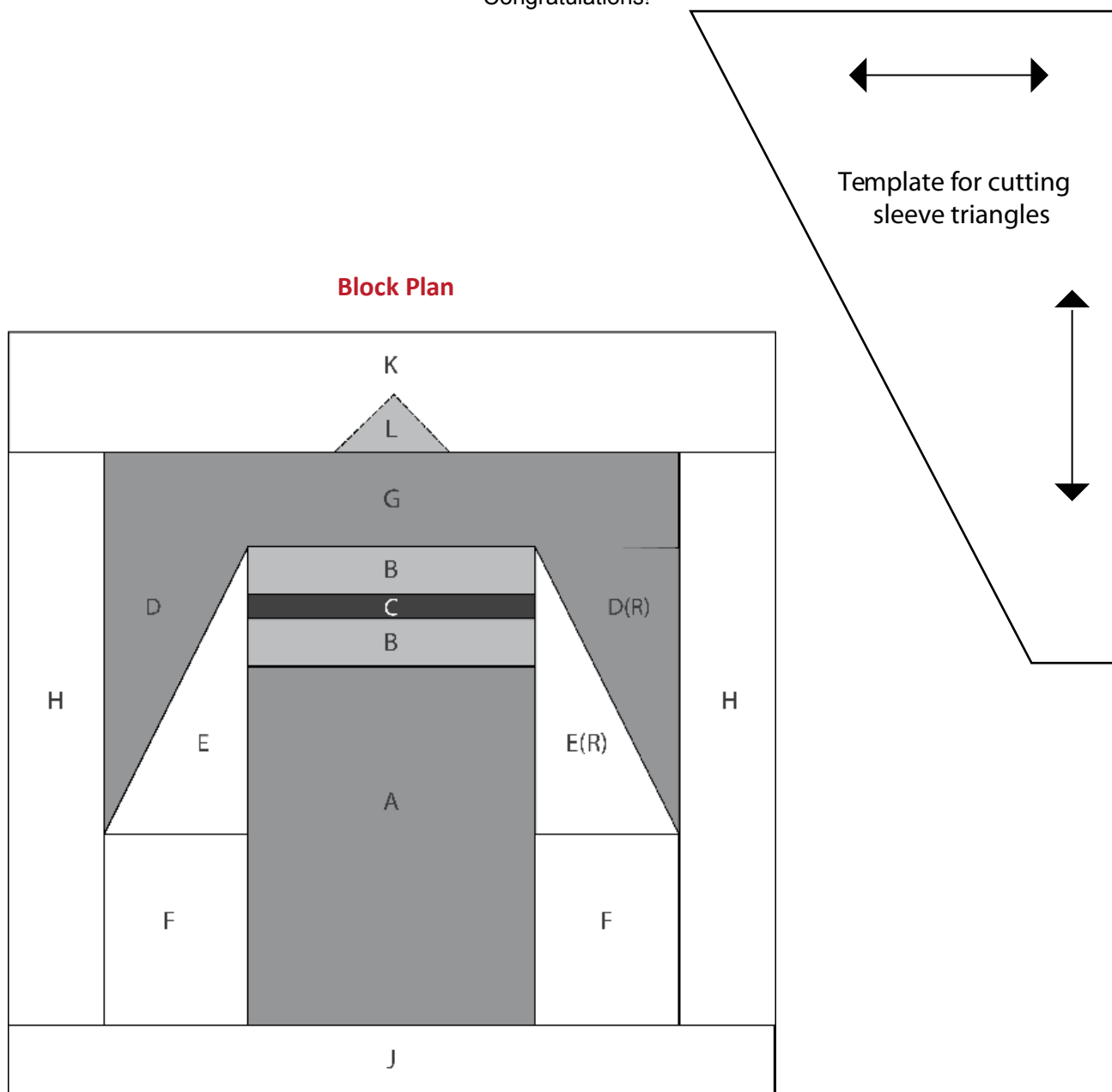
Quilting

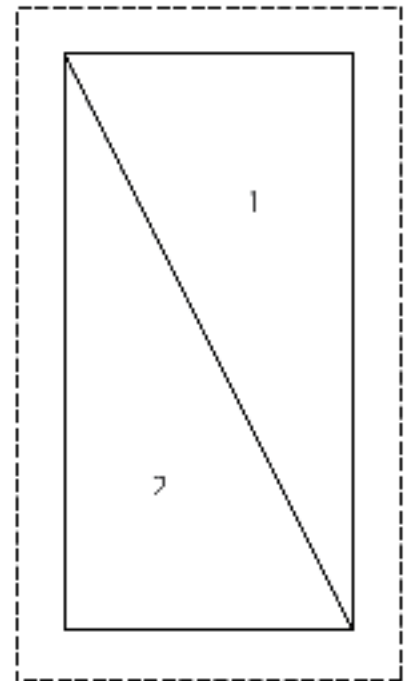
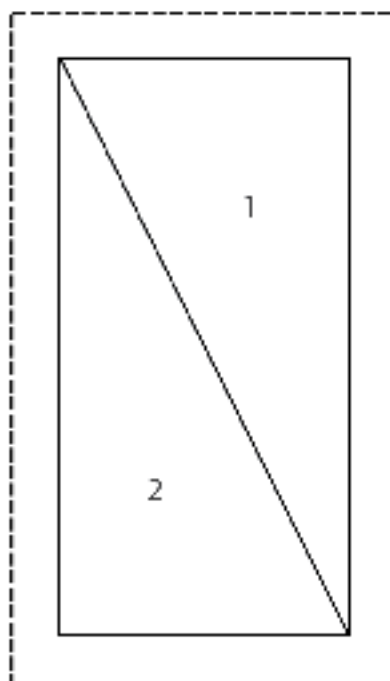
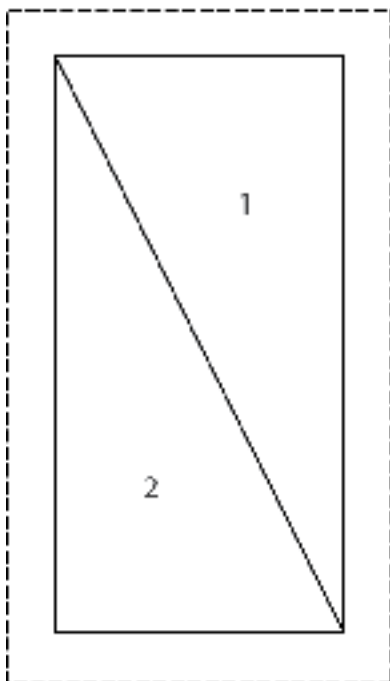
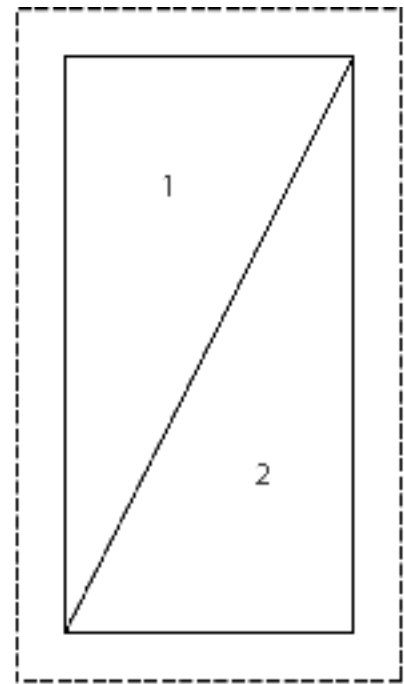
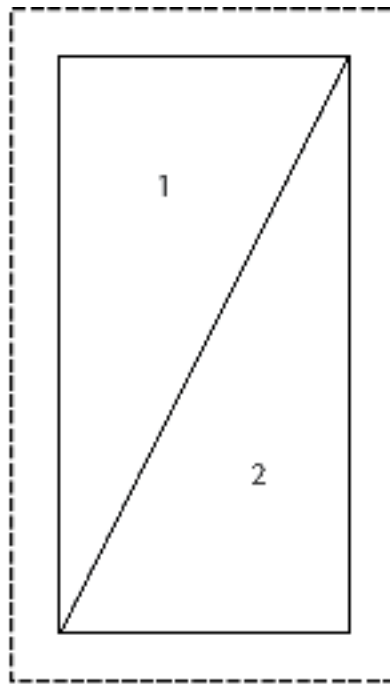
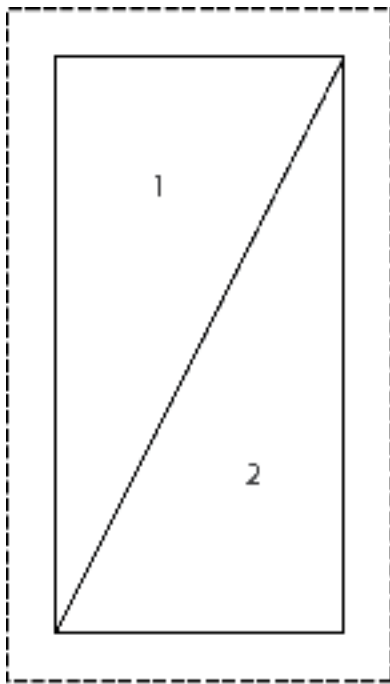
1. Give the quilt top a careful pressing to make sure the seams are all lying flat and in the right direction.
2. Spread out the backing face down on a large flat surface.
3. Lay the batting over and smooth out any wrinkles or bumps.
4. Lay the quilt top in the centre of the batting and backing. Make sure the top is lying flat and there are no wrinkles.
5. Use your favourite method of securing the layers together - basting by hand, safety pins, tacks or spray.
6. Quilt by hand or machine (or a combination of both). For the quilt in the photo I stabilized the layers by first quilting in the ditch along all the straight lines and around the Kimonos. Then I added some decorative stitching in the backgrounds and the Outer Border.
7. Trim the excess batting and backing fabric back to the edge of the quilt top.

Binding

1. Join the five binding strips together using a mitred seam to spread the thickness of the seam.
2. Press over ¼" along one long edge of the binding.
3. Sew the other edge of the binding strip to the edge of the quilt sandwich, mitreing the corners.
4. Turn the binding to the back and slip stitch down to the back by hand.
5. Don't forget to label your quilt with any important details like your name, date and the occasion.

Congratulations!





Foundation patterns for Kimono Sleeves

Sew on the solid diagonal line.
Cut along the dotted line.

Print this page out three times.
Please check the dotted rectangles measure 2" x 3½". It is important that your printer does not compress or 'fit to page' when printing.



835/1 LABEL (not to scale each picture actual size 4" x 4")



837/X PATCHWORK



837/Q PATCHWORK



*840/X PARASOLS



*840/G PARASOLS



*836/1 BORDER STRIPE



*838/X FLORAL



842/1 STRIPE



*838/Q FLORAL



841/R MAPLE LEAF



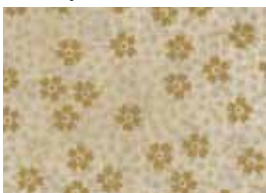
841/N MAPLE LEAF



841/G MAPLE LEAF



*839/1 MINI SQUARES



843/Q DITZY



*843/Y DITZY



843/G DITZY



*843/R6 DITZY



*843/N DITZY



843/X DITZY



Kimono Quilt by Hilary Gooding
Finished size 37" x 37"

*Indicates fabric used in quilt (also uses 2800/X01 and R48). Fabrics shown are 50% of actual size.