

michael miller FABRICS

OVERLOOKING THE ROSE ARBOR Quilt

Size: 42"W x 54"H | Pattern by: Marinda Steward | Skill Level: Confident Beginner



Free Pattern available on michaelmillerfabrics.com



FABRIC REQUIREMENTS

BATTING: 50"W X 62"H



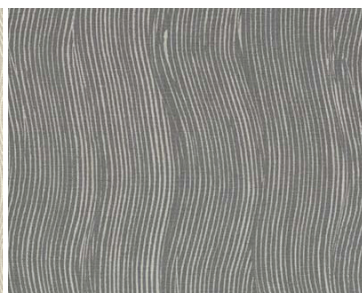
CJ3362-GREEN
2/3 YARD



CJ2517-BLUE
FAT 1/4



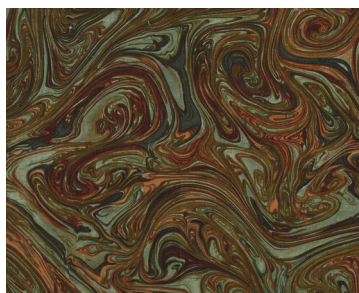
**DC7328-SAND
BEACH COMBER**
1/4 YARD



**DC7328-STONE
BEACH COMBER**
1/4 YARD



**DC7529-SAND
TAOS TEXTURE**
1/2 YARD



**CX1087-MOSS
MARBLE**
5/8 YARD



**CJ2932-GRAY
JUST ROCKS**
3/4 YARD



**CJ2932-GRAY
JUST ROCKS**
2-3/4 YARDS (BACKING)

FABRIC REQUIREMENTS

SKU	YARDAGE PER ONE QUILT	# OF BOLTS FOR 12 KITS	# OF BOLTS FOR 24 KITS
(A) CJ3362-GREEN	2 / 3 YARD	1 BOLT (4 YARDS)	1 BOLT (8 YARDS)
(B) CJ2517-BLUE	FAT 1 / 4	1 BOLT (3 YARDS)	1 BOLT (6 YARDS)
(C) DC7328-SAND	1 / 4 YARD	1 BOLT (3 YARDS)	1 BOLT (6 YARDS)
(D) DC7328-STONE	1 / 4 YARD	1 BOLT (3 YARDS)	1 BOLT (6 YARDS)
(E) DC7529-SAND	1 / 2 YARD	1 BOLT (6 YARDS)	1 BOLT (12 YARDS)
(F) CX1087-MOSS	5 / 8 YARD	1 BOLT (7-1 / 2 YARDS)	1 BOLT (15 YARDS)
(G) CJ2932-GREY	3 / 4 YARD	1 BOLT (9 YARDS)	2 BOLTS (18 YARDS)
(BACKING) CJ2932-GREY	2-3 / 4 YARDS	3 BOLTS (33 YARDS)	5 BOLTS (66 YARDS)
TOTAL BOLTS NEEDED		10 BOLTS (7 W / O BACK)	13 BOLTS (8 W / O BACK)

WE DO OUR BEST TO MAKE SURE THESE ARE ACCURATE YARDAGES BUT THESE ARE ESTIMATES UNTIL THE FINAL PATTERN IS COMPLETED AND EDITED. THANK YOU.

Overlooking the Rose Arbor
 Quilt Designed by Marinda Stewart
 Size: 42" W x 54" H
 Skill Level: Confident Beginner

Fabrics	Yardage	Cutting
CX3362 Green Rose Arbor	2/3 yard *	(1) 21" x 21" square
CX2517 Blue Clouds	Fat 1/4	(2) 10 1/2" squares
DC7328 Sand Beach Comber	1/4 yard	(6) 2 1/2" x 13" (1) 2 1/2" x 38 1/2"
DC7328 Stone Beach Comber	1/4 yard	(6) 2 1/2" x 13" (1) 2 1/2" x 24 1/2"
DC7529 Sand Taos Texture	1/2 yard	(2) 3 1/2" x 38 1/2" (2) 3 1/2" x 30 1/2"
CX1087 Moss Marble	5/8 yard	(5) 2 1/2" x W.O.F. - binding (2) 1 1/2" x 30 1/2" (2) 1 1/2" x 46 1/2" ** (6) 1 1/2" x 4 1/2"
CJ2932 Grey Just Rocks	3/4 yard	(2) 4 1/2" x 11 1/2" (2) 4 1/2" x 22 1/2" (1) 4 1/2" x 7 1/2" (1) 4 1/2" x 14 1/2" (1) 4 1/2" x 15 1/2" (1) 4 1/2" x 19 1/2" (1) 4 1/2" x 23 1/2" (1) 4 1/2" x 26 1/2"
For the Backing: CJ2932 Grey Just Rocks	2 3/4 yards	Trim Selvage. Cut in half horizontally. Sew right sides together to make 50" x 88" piece. Trim to 50" x 62" for backing.

Also Needed: 50" x 62" batting, threads to match, scissors, straight pins, rotary cutter, acrylic ruler, and mat.

OPTIONAL (but recommended) Permanent, broad tip, waterproof, black fabric marker.
* Repeat is every 23 1/2". There are (2) motifs on each width of fabric. ** Pieced for length

Directions:

1. From CX3362 21" square cut into (4) equal squares 10 1/2" each. To make one attic window block - sew one DC7328 Sand 2 1/2" x 13" piece to the left side of one 10 1/2" square. Align pieces at the top of the 10 1/2" square. Sew to within 1/4" of the bottom of the square. Repeat for the bottom edge using DC7328 Stone 2 1/2" x 13" piece. Start from the right edge and sew to within 1/4" of the left side. Using the remaining fabric from DC7328 Sand and Stone miter the corner with a 45° angle. Trim away excess fabric from the back. Repeat for each CX3362 10 1/2" square. Set aside (4) blocks.
2. Repeat process for CX2517 10 1/2" squares. Make (2).
3. Sew together (2) CX2517 blocks - Row #1
Sew together (2) CX3363 blocks as shown - Row #2
Sew together (2) CX3363 bottom blocks as shown - Row #3
Sew rows together in order, as shown, to make one 24 1/2" x 36 1/2" piece.
4. Sew one DC7328 Stone 2 1/2" x 24 1/2" piece to the top of the pieced blocks. Sew one DC7328 Sand 2 1/2" x 38 1/2" piece to the right side of the pieced blocks.
5. Sew one DC7529 3 1/2" x 38 1/2" piece to each side of the quilt. Sew one DC7529 3 1/2" x 30 1/2" piece to the top and bottom of the quilt.
6. Sew one CX1087 1 1/2" x 30 1/2" piece to the top and bottom of the quilt. Sew one CX1087 1 1/2" x 46 1/2" (pieced for length) to each side of the quilt.
7. Sew one CX1087 1 1/2" x 4 1/2" piece to the right side of CJ2932 4 1/2" x 11 1/2" piece. Sew one CJ2932 4 1/2" x 22 1/2" piece to the other side of CX1087. Sew to the top of the quilt. Repeat in reverse order for the bottom strip. Sew to the bottom of the quilt. For the left side - sew one CX1087 1 1/2" x 4 1/2" piece to each end of one CJ2932 4 1/2" x 23 1/2" piece. Sew one CJ2932 4 1/2" x 15 1/2" piece to the top and one CJ2932 4 1/2" x 14 1/2" piece to the bottom of the strip. Sew to the left side. Sew one CX1087 1 1/2" x 4 1/2" piece to each end of (1) CJ2932 4 1/2" x 26 1/2" piece. Sew one CJ2932 4 1/2" x 19 1/2" piece to the top and (1) CJ2932 4 1/2" x 7 1/2" piece to the bottom of the strip. Sew to the right side of the quilt.
8. Layer backing, batting, and quilt top. Baste.

9. Quilt as desired.
10. Bind quilt using CX1087 2 1/2" strips pieced as needed for length.

OPTIONAL: (but recommended) Using a waterproof, broad tip, black, permanent fabric pen, draw in (2) "V" shaped birds in the upper right sky windowpane and another in the upper left sky windowpane.

Yardage Requirements for Kits

	For (1)	For (12)	For (24)
CX3362	2/3 yard *	4 yards (1) bolt *	8 yards (1) bolt *
CX2517	Fat 1/4	3 yards (1) bolt	6 yards (1) bolt
DC7328 Sand	1/4 yard	3 yards (1) bolt	6 yards (1) bolt
DC7328 Stone	1/4 yard	3 yards (1) bolt	6 yards (1) bolt
DC7529	1/2 yard	6 yards (1) bolt	12 yards (1) bolt
CX1087	5/8 yard	7 1/2 yards (1) bolt	15 yards (1) bolt
CJ2932	3/4 yard	9 yards (1) bolt	18 yards (2) bolts
Backing CJ2932	2 3/4 yards	33 yards (3) bolts	66 yards (5) bolts