



Free Spirit 

Up, Up and Away Quilt

Featuring Up, Up and Away by Sue Penn

Witness hot air balloons rise and soar through the traditionally pieced windows in the Up, Up and Away throw quilt. Sue's Balloon Festival print is cut simply, with no fussy cutting required!

Collection:	Up, Up and Away by Sue Penn
Technique:	Pieced
Finished Size:	58" x 67¾" (1.47m x 1.72cm)

All possible care has been taken to assure the accuracy of this pattern. We are not responsible for printing errors or the manner in which individual work varies. Please read the instructions carefully before starting this project. If kitting, it is recommended a sample is made to confirm accuracy.

Project designed by Sue Penn | Tech edited by Yvonne Fuchs

Fabric Requirements

DESIGN	COLOR	ITEM ID	YARDAGE
(A) Balloon Festival	Multi	PWSP039.MULTI	1 yard (0.91m)
(B) Skyscape	Multi	PWSP040.MULTI	$\frac{3}{4}$ yard (0.69m)
(C) Daydreams	Multi	PWSP041.MULTI	$\frac{3}{4}$ yard (0.69m)
(D) Meadow	Multi	PWSP043.MULTI *	$\frac{5}{8}$ yard (0.57m)
(E) Up, Up & Away	Blue	PWSP046.BLUE	1 $\frac{1}{4}$ yards (1.14m)
(F) Medallions	Navy	PWSP016.NAVY	$\frac{7}{8}$ yard (0.80m)

* binding

Backing (Purchased Separately)

44" (1.12m) wide

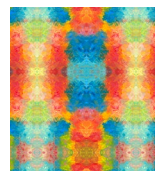
Paper Flowers Green PWSP044.GREEN 3 $\frac{3}{4}$ yards (3.43m)

OR

108" (2.74m) wide 1 $\frac{7}{8}$ yards (1.71m)



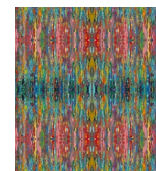
(A)



(B)



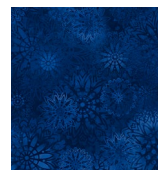
(C)



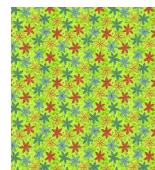
(D)



(E)



(F)



Backing
44"

Additional Recommendations

- 100% cotton thread in colors to match
- 66" x 76" (1.67m x 1.93m) batting

Cutting

WOF = Width of Fabric

Fabric A, cut:

(Reference **Fabric A** Cutting Chart shown right)

(4) $8\frac{1}{4}"$ x WOF; sub-cut

(5) $8\frac{1}{4}"$ squares from each WOF strip, to total
(20) squares

Fabric B, cut:

(4) $1\frac{1}{2}"$ x WOF; sub-cut

(16) $1\frac{1}{2}"$ x $9\frac{1}{4}"$ rectangles

(7) $1\frac{1}{2}"$ x WOF; set aside for top assembly

(2) $1\frac{1}{2}"$ x WOF; trim both strips to measure
 $1\frac{1}{2}"$ x $40\frac{1}{2}"$ for top assembly

Fabric C, cut:

(6) $3\frac{1}{2}"$ x WOF; set aside for top assembly

Fabric D, cut:

(7) $2\frac{1}{2}"$ x WOF strips for binding

Fabric E, cut:

(7) $5\frac{1}{2}"$ x WOF; set aside for top assembly

Fabric F, cut:

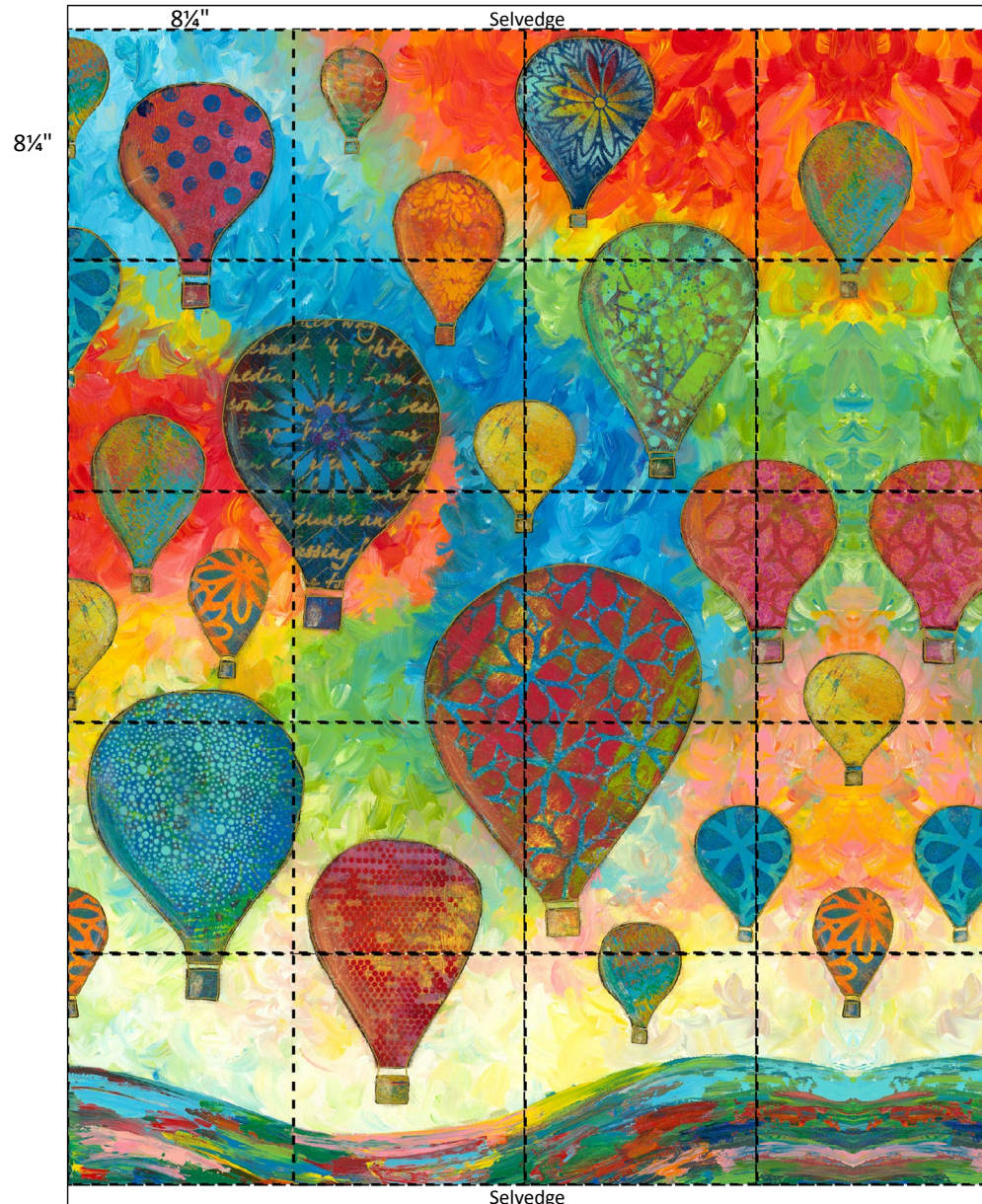
(10) $1\frac{1}{2}"$ x WOF; sub-cut

(20) $1\frac{1}{2}"$ x $9\frac{1}{4}"$ rectangles and

(20) $1\frac{1}{2}"$ x $8\frac{1}{4}"$ rectangles

(6) $1\frac{1}{2}"$ x WOF; set aside for top assembly

Fabric A Cutting Chart

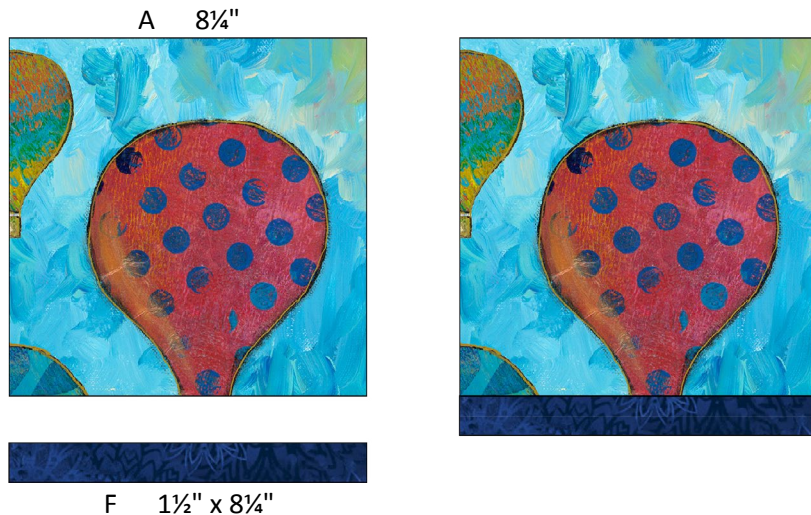


Sewing

Note: All seam allowances are $\frac{1}{4}$ " (.64cm) unless otherwise noted. Sew pieces right sides together. Press seam allowances open unless otherwise indicated.

1. The $8\frac{1}{4}$ " **Fabric A** squares will be placed in the quilt so that the hot air balloons are rising and continuous, as if looking through the windows. Squares cut from each WOF strip should be placed in the exact order they were sub-cut from the strip, and not mixed or rearranged, to make a continuous picture. Reference the **Quilt Layout** diagram (page 6) and the **Fabric A** Cutting Chart (page 3).
2. Sew (1) $1\frac{1}{2}$ " x $8\frac{1}{4}$ " **Fabric F** rectangle to the bottom of each $8\frac{1}{4}$ " **Fabric A** square (**Fig. 1**). Press toward **Fabric F**. Ensure that the **Fabric A** squares are oriented properly, with **Fabric F** rectangles being sewn to the bottom of the squares. The illustrations on the **Fabric A** square should be upright.

Fig. 1



3. Sew (1) $1\frac{1}{2}$ " x $9\frac{1}{4}$ " **Fabric F** rectangle to the right side of each **Fabric A** square (**Fig. 2**). Press toward **Fabric F**. Ensure **Fabric A** squares are oriented properly. Blocks should measure $9\frac{1}{4}$ " x $9\frac{1}{4}$ " (23.5cm x 23.5cm) unfinished.

Fig. 2



Top Assembly

4. Sew (7) 1½" x WOF **Fabric B** strips together for length using diagonal seams. From the long strip, sub-cut (5) 1½" x 48¼" strips.
5. Arrange blocks created in Steps 1-3 as shown in the **Quilt Layout** diagram (page 6). Blocks should be placed so that the **Fabric A** print appears continuous moving from block to block. Place (1) 1½" x 9¼" **Fabric B** rectangle horizontally between each block. Place (1) 1½" x 48¼" **Fabric B** strip vertically in between each vertical block row and on either side of the quilt top center. Place (1) 1½" x 40½" **Fabric B** strip horizontally at the top and bottom of the quilt top center.
6. Sew vertical block rows together first, pressing toward **Fabric B**. Then, sew vertical block rows and vertical 1½" x 48¼" **Fabric B** strips together. Press toward **Fabric B**.
7. Sew the 1½" x 40½" **Fabric B** strip to the top and bottom of the quilt top center. The quilt top center should measure 40½" x 50¼" unfinished.
8. Sew (6) 3½" x WOF **Fabric C** strips together for length using diagonal seams. From the long strip, sub-cut (2) 3½" x 50¼" Side Border strips and (2) 3½" x 46½" Top/Bottom Border strips.
9. Sew (6) 1½" x WOF **Fabric F** strips together for length using diagonal seams. From the long strip, sub-cut (2) 1½" x 56¼" Side Border strips and (2) 1½" x 48½" Top/Bottom Border strips.

10. Sew (7) 5½" x WOF **Fabric E** strips together for length using straight ¼" seams. Match prints, if possible, for a seamless transition from strip to strip. (One extra WOF strip has been cut to allow prints to match if possible.) From the long strip, sub-cut (2) 5½" x 58¼" Side Border strips and (2) 5½" x 58½" Top/Bottom Border strips.
11. Attach **Fabric C** borders to all sides of the quilt top center. Attach Side Borders first, followed by Top/Bottom Borders. Press outward.
12. Attach **Fabric F** borders to all sides of the quilt top. Attach Side Borders first, followed by Top/Bottom Borders. Press outward.
13. Attach **Fabric E** borders to all sides of the quilt top. Attach Side Borders first, followed by Top/Bottom Borders. Press outward. Once complete, the quilt top should measure 58½" x 68¼" (1.49m x 1.73m) unfinished.

Finishing

14. Layer the backing (wrong side up), batting and quilt top (right side up). Baste quilt layers together and quilt as desired.
15. Sew together the (7) 2½" x WOF **Fabric D** binding strips end to end using diagonal seams. Press the seams open. Press the binding strip in half wrong sides together.
16. Trim excess batting and backing even with the top of the quilt.

17. Leaving an 8" tail of binding, sew binding to top of quilt through all layers matching all raw edges. Miter corners. Stop approximately 12" from where you started. Lay both loose ends of binding flat along quilt edge. Where these two loose ends meet, fold them back on themselves and press to form a crease. Using this crease as your stitching line, sew the two open ends of the binding together right sides together. Trim seam to ¼" and press open. Finish sewing binding to quilt.
18. Turn binding to back of quilt and hand stitch in place.

Quilt Layout

