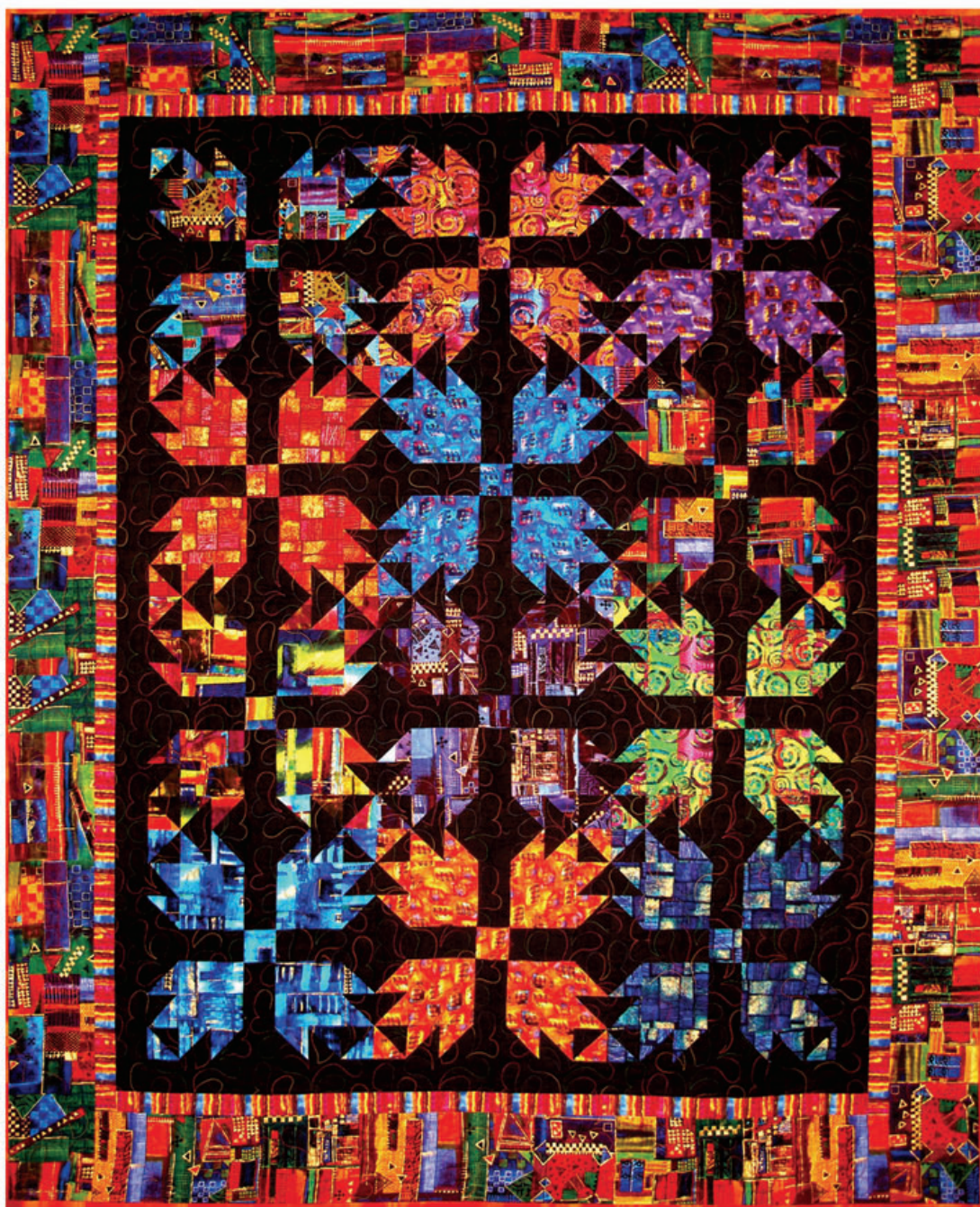
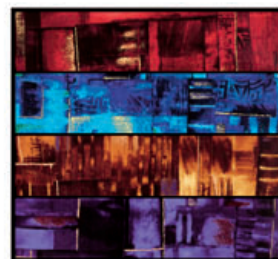


# THE FIRE WITHIN by sherrill kahn



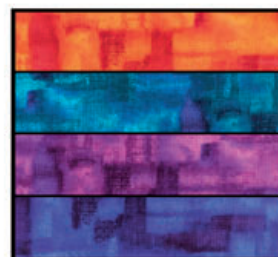
Quilt and Pattern  
by Margrit Hall



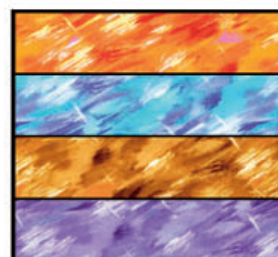
ASKM-5014, 2 CRIMSON, 1 TURQUOISE,  
4 ADOBE, 3 AMETHYST



ASKM-5022, 6 TROPIC, 2 FLAME,  
3 TEAL, 5 ADOBE



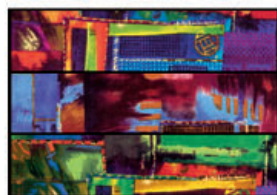
ASK-5021, 5 FLAME, 7 TEAL,  
3 AMETHYST, 1 ROYAL



ASK-5016, 4 TROPIC, 3 TURQUOISE,  
7 ADOBE, 5 LAVENDER



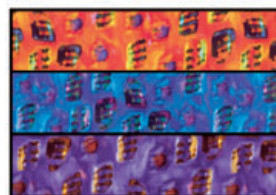
ASKM-5013, 6 FLAME, 5 ADOBE,  
3 TROPIC



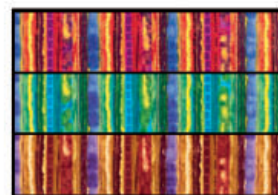
ASKM-5015, 2 FLAME, 4 ADOBE,  
3 TROPIC



ASK-5019, 3 FLAME, 5 TROPIC,  
2 ADOBE



ASK-5020, 1 FLAME, 2 TROPIC,  
4 ADOBE



ASKM-5017, 1 FLAME, 3 TROPIC,  
6 ADOBE

ROBERT KAUFMAN  
F A B R I C S



# THE FIRE WITHIN by sherrill kahn

By: Margrit Hall  
Quilt: 60" x 74"

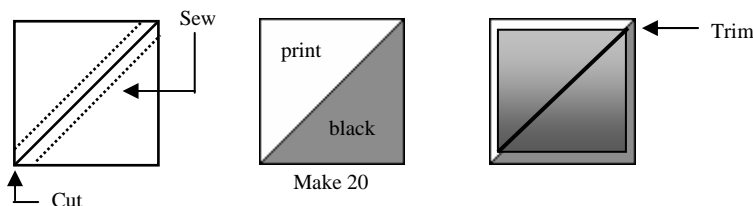
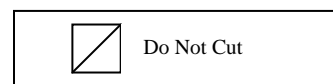
ROBERT KAUFMAN  
F A B R I C S

All Seams are 1/4" – All strips are cut the width of the fabric (carefully trim all selvages) – Seams are pressed open unless instructed otherwise

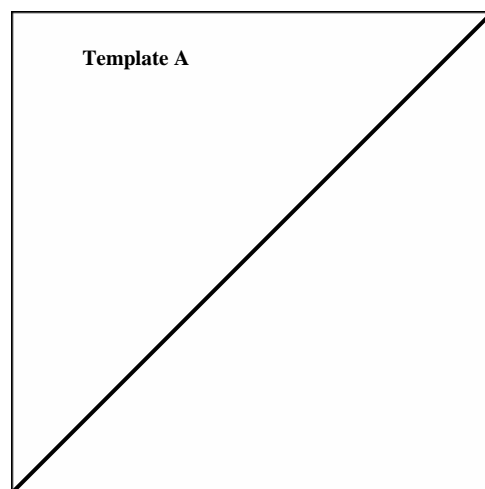
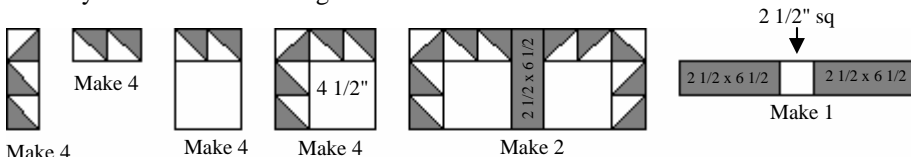
Fabric	Yardage Requirements	Cutting Directions
12 different fabrics from the Fire on the Water Collection	3/8 yard of each fabric plus an additional 1 yard of one of the fabrics for the 3rd border	Cut 1 strip 4 1/2" wide from each of the fabrics. From each strip cut 4 squares 4 1/2" x 4 1/2". Cut 1 strip 3" wide from each of the fabrics, and cut into 10 squares 3" x 3" and 1 square 2 1/2" x 2 1/2". Cut 7 strips 6" wide for the 3rd border.
Striped fabric from the collection (2nd border)	1/2 Yard	Cut 7 strips 1 3/4" wide.
Multi-dye Cotton Black (background & 1st border)	1 7/8 Yards	Cut 9 strips 3" wide. Cut into 120 squares 3" x 3". Cut 3 strips 6 1/2" wide, and cut into 48 rectangles 6 1/2" x 2 1/2". Cut 6 strips 2 1/2" wide for the 1st border.
Binding (your choice)	5/8 yard	Cut 7 strips 2 1/4" wide.

## Block Construction (to construct one block)

1. Draw a diagonal line on the reverse side of 10 black 3" squares (a white chalk marker or white pencil shows up on the black fabric).
2. Place the 10 squares, right sides together, with 10 squares of one color of the 3" print squares. Sew a scant 1/4" away from both sides of the diagonal line. Cut on the diagonal line. Open the square and press seams. There will be a total of 20 half square triangle units. Place the 2 1/2" Template A square on top of each half square triangle unit with the diagonal line of the template centered on the diagonal seam and trim the unit to measure 2 1/2" square.

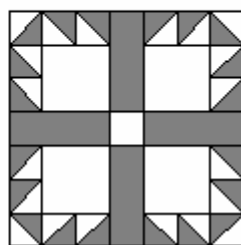


3. Layout block and sew together as illustrated.



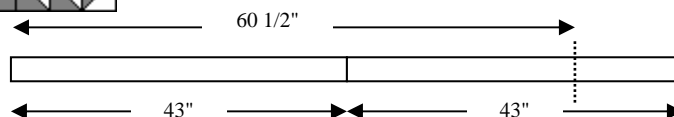
## Quilt Assembly

1. Using color photo, layout blocks to construct quilt top. There will be 4 rows of 3 blocks each.
2. Borders (measure quilt body – if your measurements are different, cut to your measurements)



Make 1  
Repeat for all 12 colors

**1st Border** Cut two of the 2 1/2" wide strips down to measure 2 1/2" x 42 1/2". Sew to the top and bottom of the quilt. Sew two of the 2 1/2" x width of fabric strips together end to end. Repeat to make two sets. Cut down to measure 60 1/2", and sew to sides of quilt.



**2nd Border** Cut one of the 1 3/4" x width of fabric strips in half to make 2 strips 1 3/4" x 21 1/2" and sew end to end with a 1 3/4" x width of fabric strip. Repeat to make two sets. Cut down to measure 46 1/2". Sew to the top and bottom of the quilt. Sew two 1 3/4" x width of fabric strips together end to end. Repeat to make two sets. Cut each set down to measure 63" and sew to sides of quilt.



**3rd Border** Repeat the directions for the 2nd border with the 6" wide 3rd border strips except cut the top and bottom borders to measure 49" and the sides to measure 74"