

STONE GARDEN

By Ashley Hough | Finished size: Approximately 65" x 65"

Fabric Requirements

(Based on 40" - 42" of usable fabric)

Fabric 1 (Light Grey): 1 ½ yards

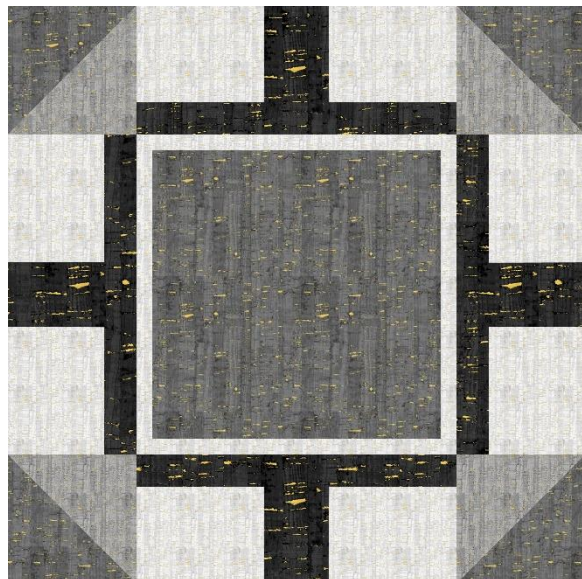
Fabric 2 (Medium Grey): 1 ½ yards

Fabric 3 (Dark Grey): 2 yards

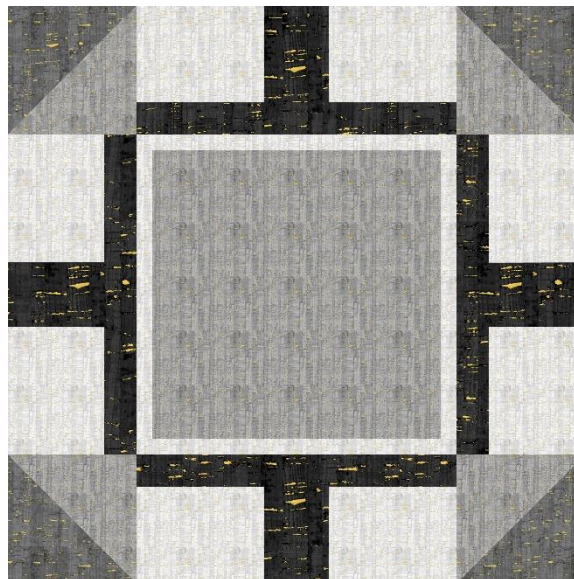
Fabric 4 (Black): 1 7/8 yards

Inner Block

(Make 13- Fabric 3 Center)



(Make 12- Fabric 2 Center)



Cutting Instructions

From **Fabric 1**, cut:

- (12)** 2" x WOF strips, then sub-cut into **(200)** 2" x 2 ½" rectangles.
- (13)** ¾" x WOF strips, then sub-cut into **(50)** ¾" x 5" rectangles and **(50)** ¾" x 5 ½" rectangles

From **Fabric 2**, cut:

- (2)** 5" x WOF strips, then sub-cut into **(12)** 5" squares
- (4)** 2 7/8" x WOF strips, then sub-cut into **(50)** 2 7/8" squares

From **Fabric 3**, cut:

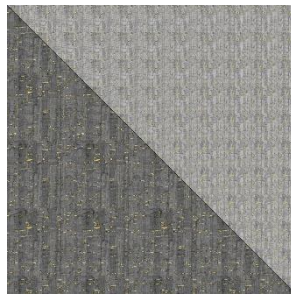
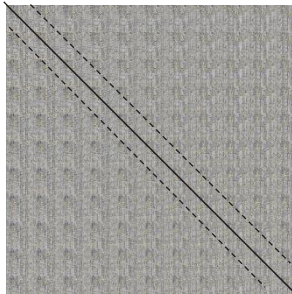
- (2)** 5" x WOF strips, then sub-cut into **(13)** 5" squares
- (4)** 2 7/8" x WOF strips, then sub-cut into **(50)** 2 7/8" squares

From **Fabric 4**, cut:

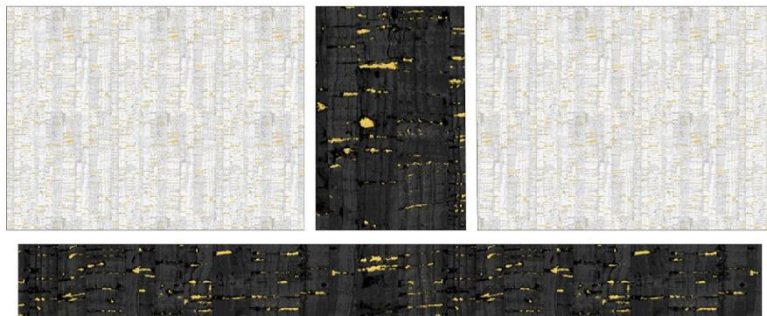
- (4)** 2" x WOF strips, then sub-cut into **(100)** 2" x 1 ½" rectangles
- (14)** 1" x WOF strips, then sub-cut into **(100)** 1" x 5 ½" rectangles

Assembly Instructions

-On the wrong side of a **Fabric 2** $2\frac{7}{8}$ " square draw a diagonal line from corner to corner. Place the marked **Fabric 2** square right sides together with a **Fabric 3** $2\frac{7}{8}$ " square. Sew $\frac{1}{4}$ " on both sides of the drawn line, then cut apart along the line and press to make **(2)** Half Square Triangles (HST). HST should measure $2\frac{1}{2}$ " square. Repeat with remaining **Fabric 2** and **Fabric 3** $2\frac{7}{8}$ " squares.



-Lay out **(2)** **Fabric 1** $2\frac{1}{2}$ " x $2\frac{1}{2}$ " rectangles, **(1)** **Fabric 4** $1\frac{1}{2}$ " x $2\frac{1}{2}$ " rectangle and **(1)** **Fabric 4** $1\frac{1}{2}$ " x $5\frac{1}{2}$ " rectangles as shown. Sew the small rectangles together first and then add the longer rectangle to the bottom. Repeat to make **(99)** more matching **Fabric 1/Fabric 4** units.



-Sew a **Fabric 2/Fabric 3** HST to both sides of the unit from the previous step as shown, rotating as needed. Repeat to make **(49)** more matching top and bottom rows.



-Lay out **(1) Fabric 3** 5" square, **(2) Fabric 1** $\frac{3}{4}$ " x 5" rectangles and **(1) Fabric 1** $\frac{3}{4}$ " x 5 $\frac{1}{2}$ " rectangles as shown. Sew the rectangles to the top and bottom of the square first and then sew the rectangles to the sides. Repeat to make **(12)** more matching center squares with **Fabric 3**, and then repeat again to make **(12)** matching center squares with the **Fabric 2** 5" squares.



-Lay out **(1)** center square and **(2) Fabric 1/Fabric 4** units as shown, rotating as needed and sew together into a center row. Repeat to make **(12)** more matching center rows with **Fabric 3**, and then repeat again to make **(12)** matching center rows with the **Fabric 2** center squares.

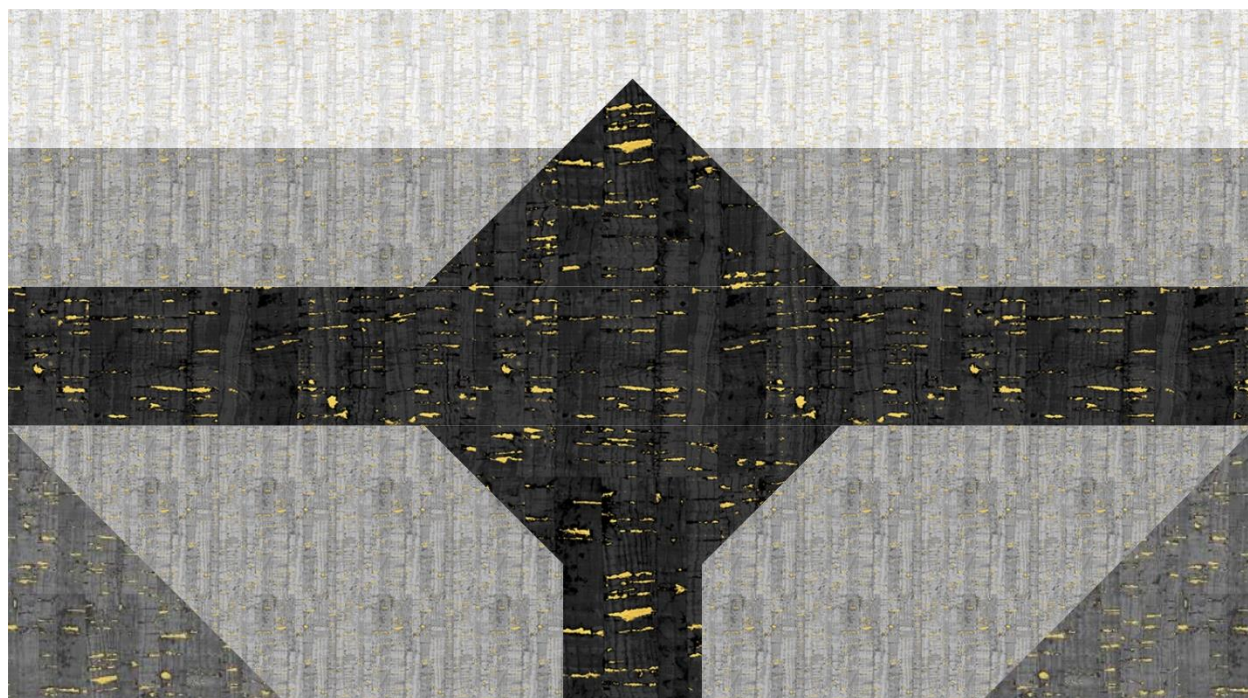


-Lay out **(1)** center row and **(2)** top and bottom rows as shown, rotating as needed and sew together into a block. Block should measure 9 ½" square. Repeat to make **(12)** more matching blocks with **Fabric 3** center rows, and then repeat again to make **(12)** matching blocks with the **Fabric 2** center rows.



Border Block

(Make 20)



Cutting Instructions

From **Fabric 1**, cut:

- (5) 1 ½" x WOF strips, then sub-cut into (40) 1 ½" x 4 ½" rectangles
- (5) 2 ¼" squares. Sub-cut each square diagonally twice into (4) QST per square- (20) total QST.
- (10) 2" squares. Sub-cut each square diagonally once into (2) HST per square (20) total HST.

From **Fabric 2**, cut:

- (2) 2 7/8" x WOF strips, then sub-cut into (20) 2 7/8" squares
- (3) 2 ½" x WOF strips, then sub-cut into (80) 2 ½" x 1 ½" squares
- (10) 2" squares
- (4) 1 ½" x WOF strips, then sub-cut into (40) 1 ½" x 3 ½" rectangles

From **Fabric 3**, cut:

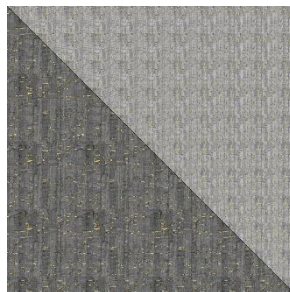
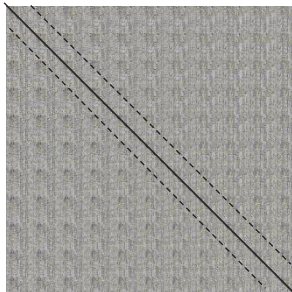
- (2) 2 7/8" x WOF strips, then sub-cut into (20) 2 7/8" squares

From **Fabric 4**, cut:

- (1) 2 ½" x WOF strip, then sub-cut into (20) 2 ½" x 1 ½" rectangles
- (5) 2 ¼" squares. Sub-cut each square diagonally twice into (4) QST per square- (20) total QST.
- (10) 2" squares
- (7) 1 ½" x WOF strips, then sub-cut into (20) 1 ½" x 9 ½" rectangles and (60) 1 ½" squares

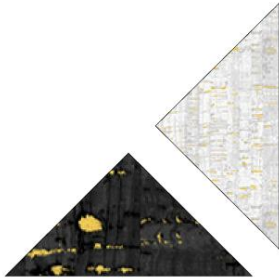
Assembly Instructions

-On the wrong side of a **Fabric 2** 2 7/8" square draw a diagonal line from corner to corner. Place the marked **Fabric 2** square right sides together with a **Fabric 3** 2 7/8" square. Sew ¼" on both sides of the drawn line, then cut apart along the line and press to make (2) Half Square Triangles (HST). HST should measure 2 ½" square. Repeat with remaining **Fabric 2** and **Fabric 3** 2 7/8" squares.

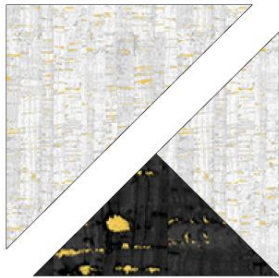


-On the wrong side of a **Fabric 2** 2" square draw a diagonal line from corner to corner. Place the marked **Fabric 2** square right sides together with a **Fabric 4** 2" square. Sew $\frac{1}{4}$ " on both sides of the drawn line, then cut apart along the line and press to make **(2)** Half Square Triangles (HST). Trim to 1 $\frac{1}{2}$ " square. Repeat with remaining **Fabric 2** and **Fabric 4** 2" squares.

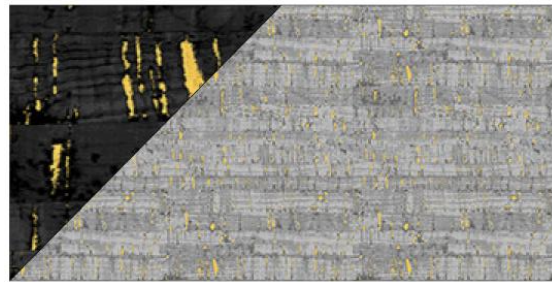
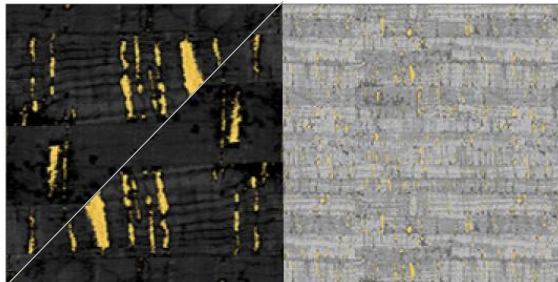
-Lay out **(1)** **Fabric 1** and **(1)** **Fabric 4** QST as shown and sew together.



-Lay out the pieced QSTs with **(1)** **Fabric 1** HST as shown and sew together. Square to 1 $\frac{1}{2}$ ". Repeat with the remaining **Fabric 1** and **Fabric 4** QSTs and HSTs.



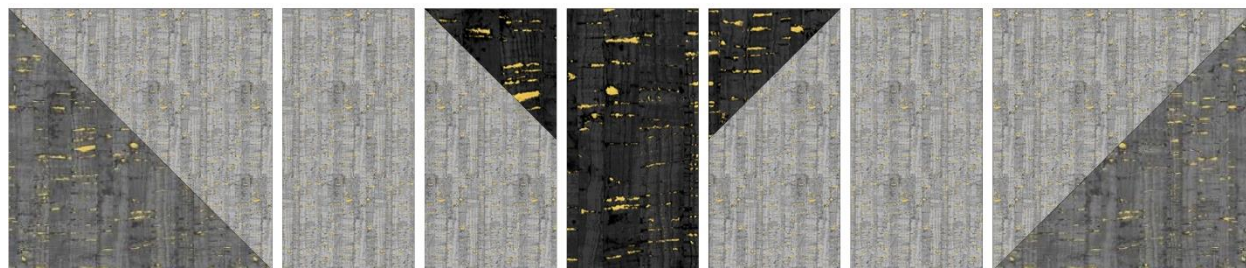
-On the wrong side of a **Fabric 4** 1 $\frac{1}{2}$ " square, draw a diagonal line from corner to corner. Place a marked **Fabric 4** square right sides together on the left side of a **Fabric 2** 1 $\frac{1}{2}$ " x 2 $\frac{1}{2}$ " rectangle as shown. Sew on the drawn line, then trim seam allowance to $\frac{1}{4}$ " and press towards square. Repeat to make **(20)** matching left units.



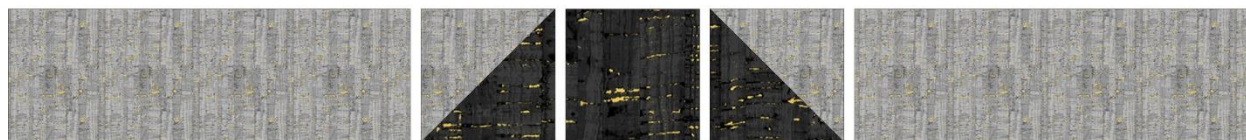
-Repeat the above step, but place the marked **Fabric 4** square on the right side of the **Fabric 2** rectangle. Repeat to make **(20)** right units.



-Lay out **(2)** **Fabric 2/Fabric 3** $2\frac{1}{2}$ " HSTs, **(2)** **Fabric 2** $2\frac{1}{2}$ " x $1\frac{1}{2}$ " rectangles, **(1)** left unit, **(1)** right unit and **(1)** **Fabric 4** $2\frac{1}{2}$ " x $1\frac{1}{2}$ " rectangle as shown. Sew together into a row and then repeat to make **(19)** more matching bottom rows.



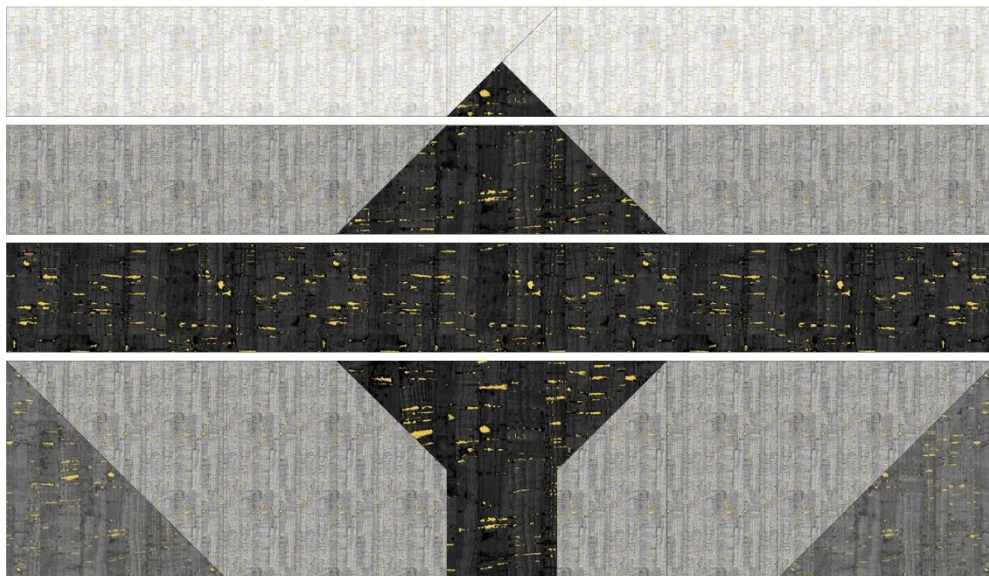
-Lay out **(2)** **Fabric 2** $1\frac{1}{2}$ " x $3\frac{1}{2}$ " rectangles, **(2)** **Fabric 2/Fabric 4** $1\frac{1}{2}$ " HSTs and **(1)** **Fabric 4** $1\frac{1}{2}$ " square as shown. Sew together into a row and then repeat to make **(19)** more matching middle rows.



-Lay out **(1)** **Fabric 1/Fabric 4** QST/HST unit and **(2)** **Fabric 1** $1\frac{1}{2}$ " x $4\frac{1}{2}$ " rectangles as shown. Sew together into a row and then repeat to make **(19)** more matching top rows.

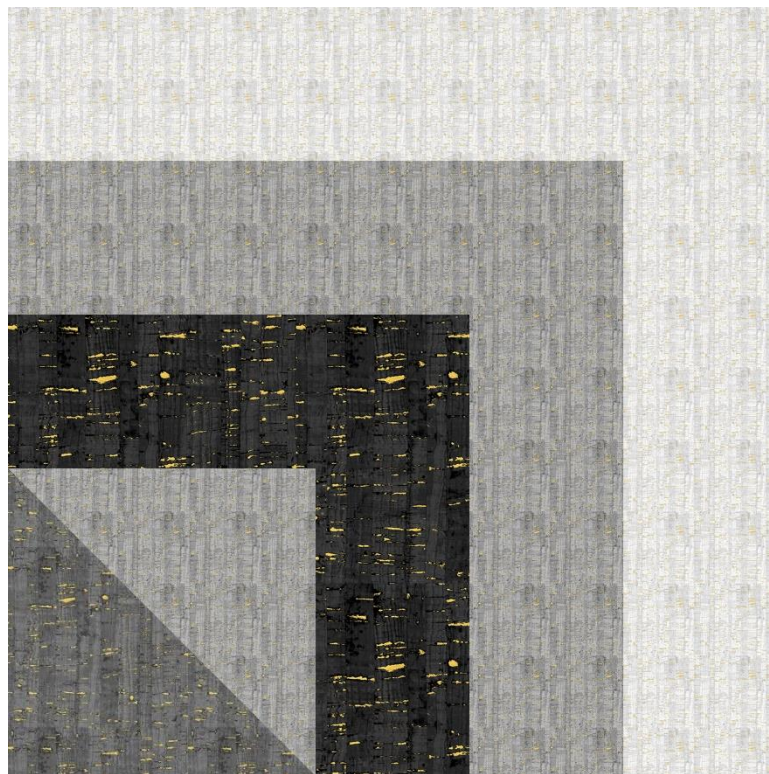


-Lay out a bottom row, middle row, top row and **(1) Fabric 4** 1 ½" x 9 ½" rectangle as shown. Sew together to make a block. Block should measure 9 ½" x 5 ½". Repeat to make **(20)** total blocks.



Corner Block

(Make 4)



Cutting Instructions

From **Fabric 1**, cut:

-(1) 1 ½" x WOF strip, then sub-cut into (4) 1 ½" x 5 ½" rectangles and (4) 1 ½" x 4 ½" rectangles

From **Fabric 2**, cut:

-(2) 2 7/8" squares

-(1) 1 ½" x WOF strip, then sub-cut into (4) 1 ½" x 4 ½" rectangles and (4) 1 ½" x 3 ½" rectangles

From **Fabric 3**, cut:

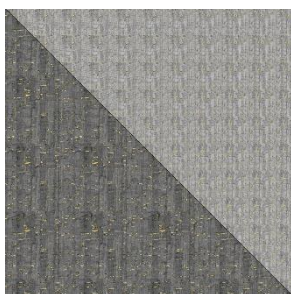
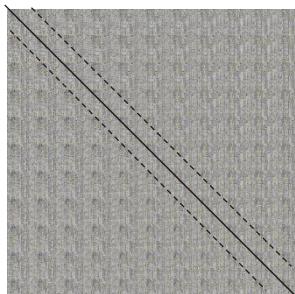
-(2) 2 7/8" squares

From **Fabric 4**, cut:

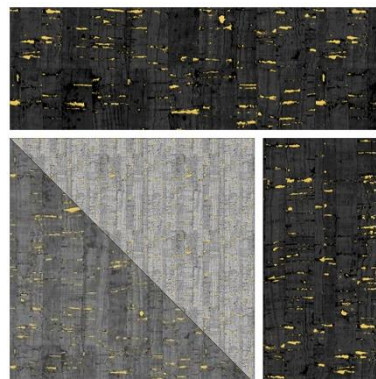
-(1) 1 ½" x WOF strip, then sub-cut into (4) 1 ½" x 3 ½" rectangles and (4) 1 ½" x 2 ½" rectangles

Assembly Instructions

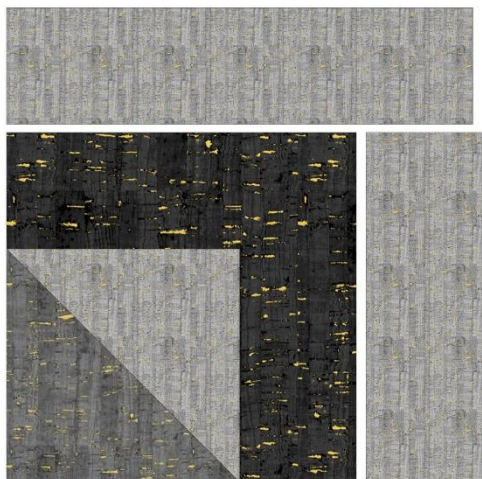
-On the wrong side of a **Fabric 2** 2 7/8" square draw a diagonal line from corner to corner. Place the marked **Fabric 2** square right sides together with a **Fabric 3** 2 7/8" square. Sew ¼" on both sides of the drawn line, then cut apart along the line and press to make (2) Half Square Triangles (HST). HST should measure 2 ½" square. Repeat with remaining **Fabric 2** and **Fabric 3** 2 7/8" squares.



-Lay out a **Fabric 2/Fabric 3** HST, (1) **Fabric 4** 1 ½" x 2 ½" rectangle and (1) **Fabric 4** 1 ½" x 3 ½" rectangle as shown. Sew the rectangle to the side first and then to the top.



-Lay out the unit from the previous step, **(1) Fabric 2** $1\frac{1}{2}" \times 3\frac{1}{2}"$ rectangle and **(1) Fabric 2** $1\frac{1}{2}" \times 4\frac{1}{2}"$ rectangle as shown. Sew the rectangle to the side first and then to the top.



-Lay out the unit from the previous step, **(1) Fabric 1** $1\frac{1}{2}" \times 4\frac{1}{2}"$ rectangle and **(1) Fabric 1** $1\frac{1}{2}" \times 5\frac{1}{2}"$ rectangle as shown. Sew the rectangle to the top first and then to the side to make a block. Block should measure $5\frac{1}{2}"$ square. Repeat to make **(4)** total blocks.



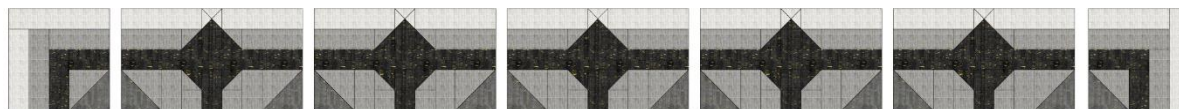
Quilt Assembly

Cutting Instructions

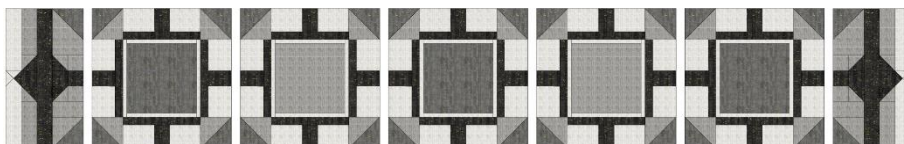
From **Fabric 3**, cut **(6)** $4\frac{1}{2}"$ x WOF strips

From **Fabric 4**, cut **(6)** $1\frac{1}{2}"$ x WOF strips

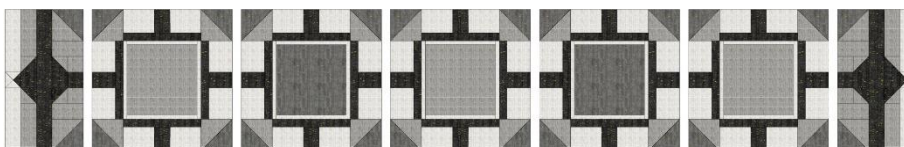
-Lay out **(2)** Corner blocks and **(5)** Border blocks as shown. Sew together into a row and then repeat to make a matching row.



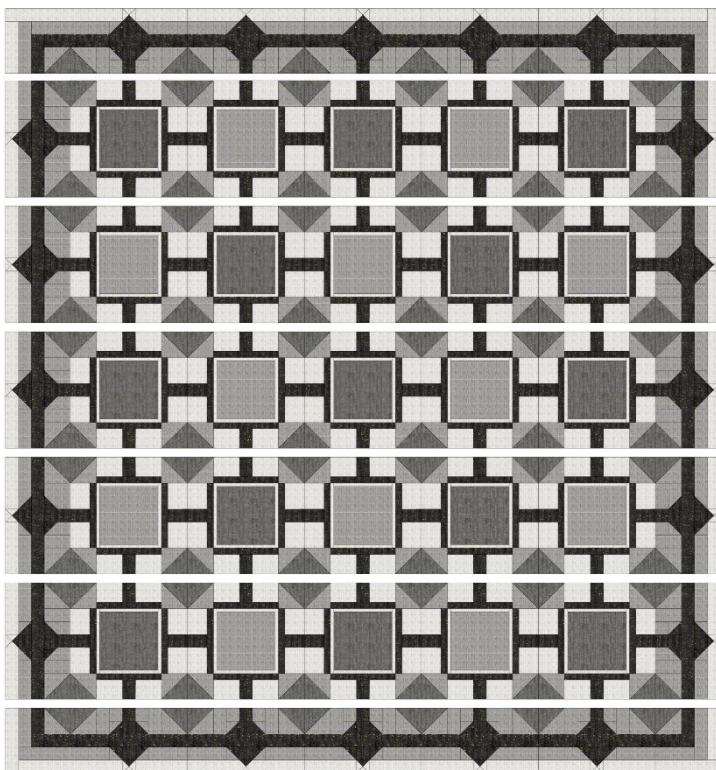
-Lay out **(2)** Border blocks, **(3)** Fabric 3 Center blocks and **(2)** Fabric 2 center blocks as shown. Sew together into a row and then repeat to make **(2)** more matching rows.



-Lay out **(2)** Border blocks, **(2)** Fabric 3 Center blocks and **(3)** Fabric 2 center blocks as shown. Sew together into a row and then repeat to make **(1)** more matching row.



-Lay out the rows as shown and then sew together.

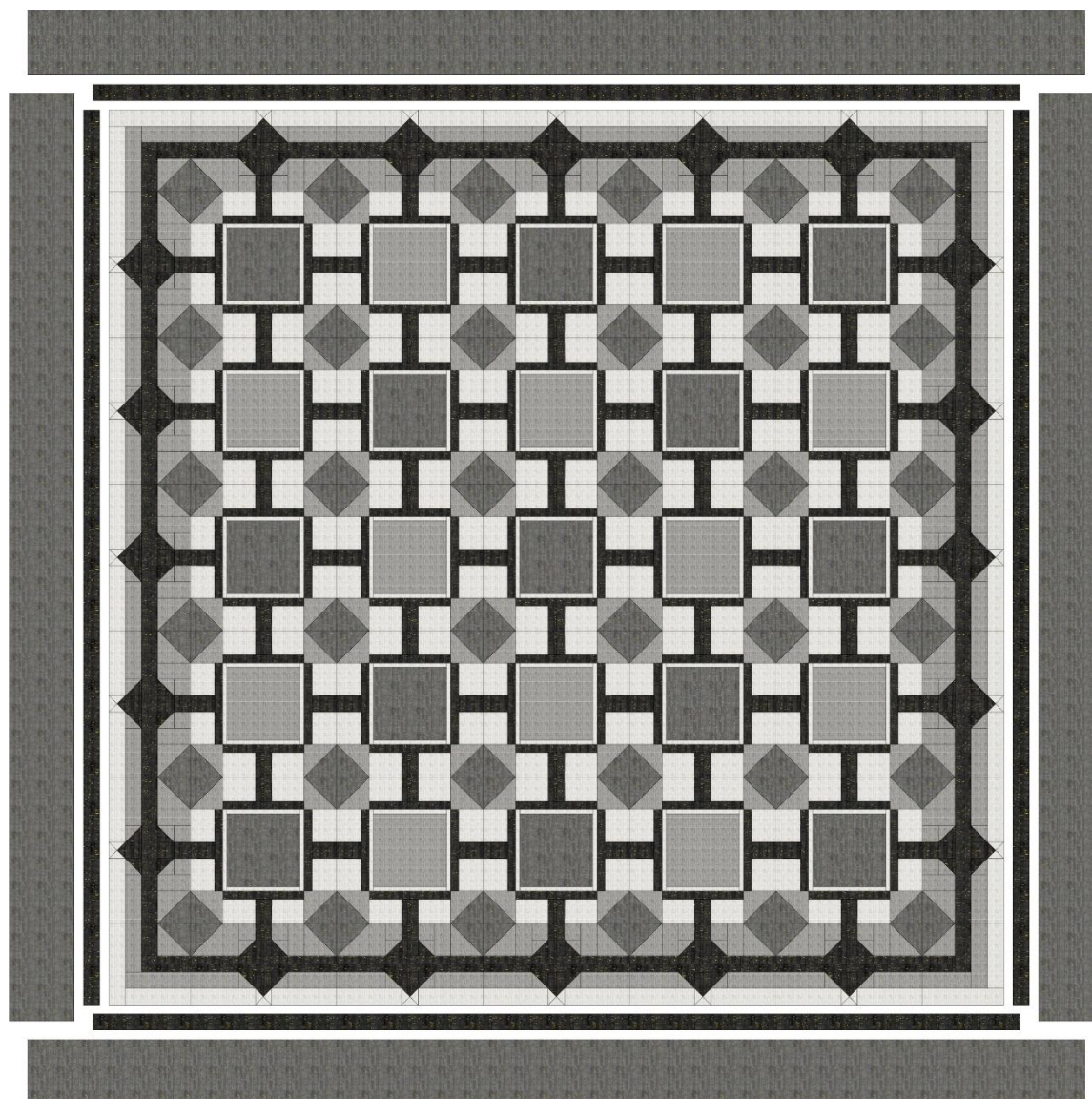


-Sew the **Fabric 3** 4 ½" strips short ends together to make one long strip. From the long strip, cut **(2)** 4 ½" x 57 ½" strips and **(2)** 4 ½" x 65 ½" strips.

-Sew the **Fabric 4** 1 ½" strips short ends together to make one long strip. From the long strip, cut **(2)** 1 ½" x 55 ½" strips and **(2)** 1 ½" x 57 ½" strips.

-Using the following diagram for reference, sew a 1 ½" x 55 ½" **Fabric 4** strip to both sides of the quilt, and then sew a 1 ½" x 57 ½" **Fabric 4** strip to the top and bottom.

-Sew a 4 ½" x 57 ½" **Fabric 3** strip to the sides of the quilt, and then sew a 4 ½" x 65 ½" **Fabric 3** strip to the top and bottom.



-Layer with batting and backing fabric and quilt as desired.

A large sheet of white paper with horizontal dashed lines, resembling a notebook page. A teal-colored banner is positioned at the bottom right, containing white text.

Want more fun projects and helpful Quilting tips?

To see more great projects and helpful quilting guides like this, and to watch exclusive quilting videos, make sure to visit us at www.nationalquilterscircle.com. Improve your quilting skills and join our community to share in the love of quilting!

Want more fun projects and helpful Quilting tips?

To see more great projects and helpful quilting guides like this, and to watch exclusive quilting videos, make sure to visit us at www.nationalquilterscircle.com. Improve your quilting skills and join our community to share in the love of quilting!