

Stained Glass Flowers

Select a border stripe with coordinating fabrics for a great designer look.

Project Specifications

Skill Level: Beginner

Candle Mat Size:

Approximately 21" x 21"
(may vary by width of
border stripe)

Fabric & Batting

- ✂ 19" x 19" square of navy solid with glitter
- ✂ 17" x 17" square white-on-white print
- ✂ 1 yard border stripe
- ✂ 1/8 yard floral print
- ✂ 1/8 yard rose print
- ✂ 2 3/4 yards purchased or self-made navy binding
- ✂ Backing 24" x 24"
- ✂ Thin batting 24" x 24"

Supplies & Tools

- ✂ 1/4 yard fusible web
- ✂ 1/4 yard fabric stabilizer
- ✂ 1 roll navy quick-bias
- ✂ Machine-embroidery thread to match appliqué fabrics
- ✂ Clear nylon monofilament
- ✂ All-purpose thread to blend with fabrics
- ✂ Natural quilting thread

Instructions

1. Fold 19" navy solid with glitter square in quarters. Place border template on folds and cut. Put aside.
2. Prepare the appliqué pieces as instructed on patterns, referring to Fusible Appliqué in General Instructions.
3. Find center of white-on-white square. Position navy center square on-point; fuse.
4. Referring to Placement Diagram, arrange floral print appliqué pieces; fuse. Fuse navy quick-bias to point of each petal as shown in Figure 1. Hand-appliqué along each edge to secure.
5. Referring to Placement Diagram, place small navy squares in center of each flower; fuse. Add rose petals to each corner of navy square; fuse.
6. Add quick-bias around each rose petal in one continuous line; fuse. Hand-appliqué along each edge to secure.
7. Pin the navy border cut in step 1 to the outside

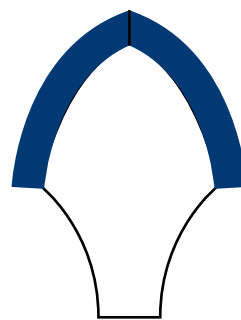
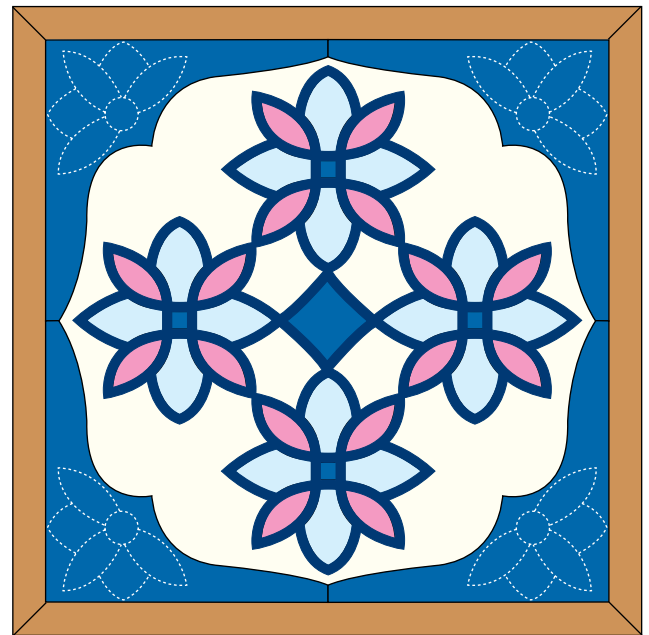


Figure 1

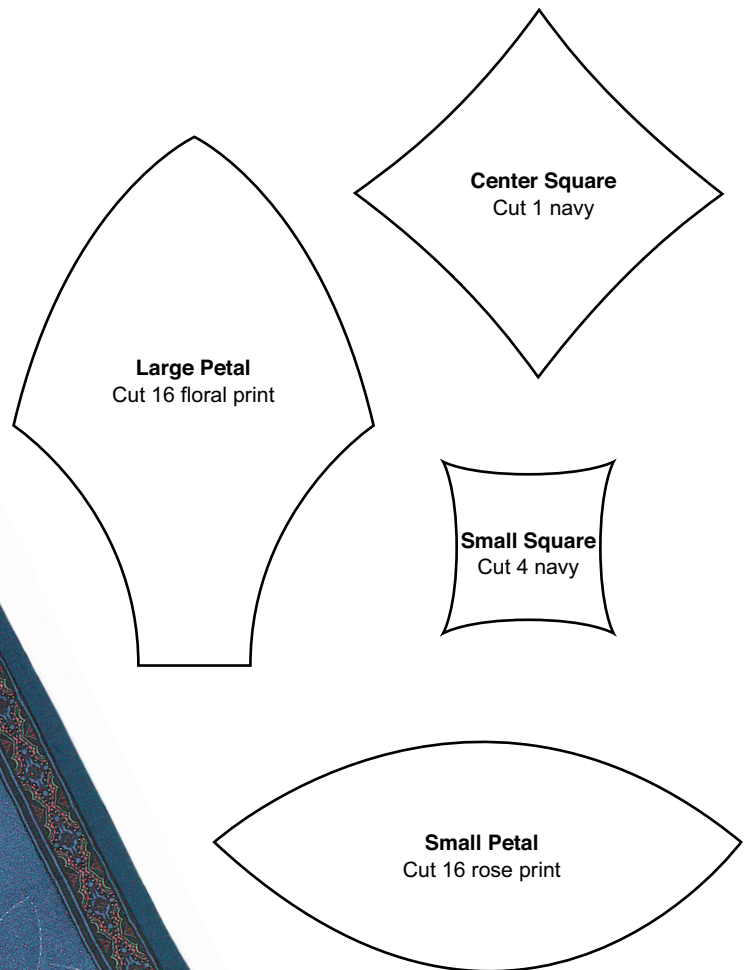
Fuse quick-bias to point as shown.

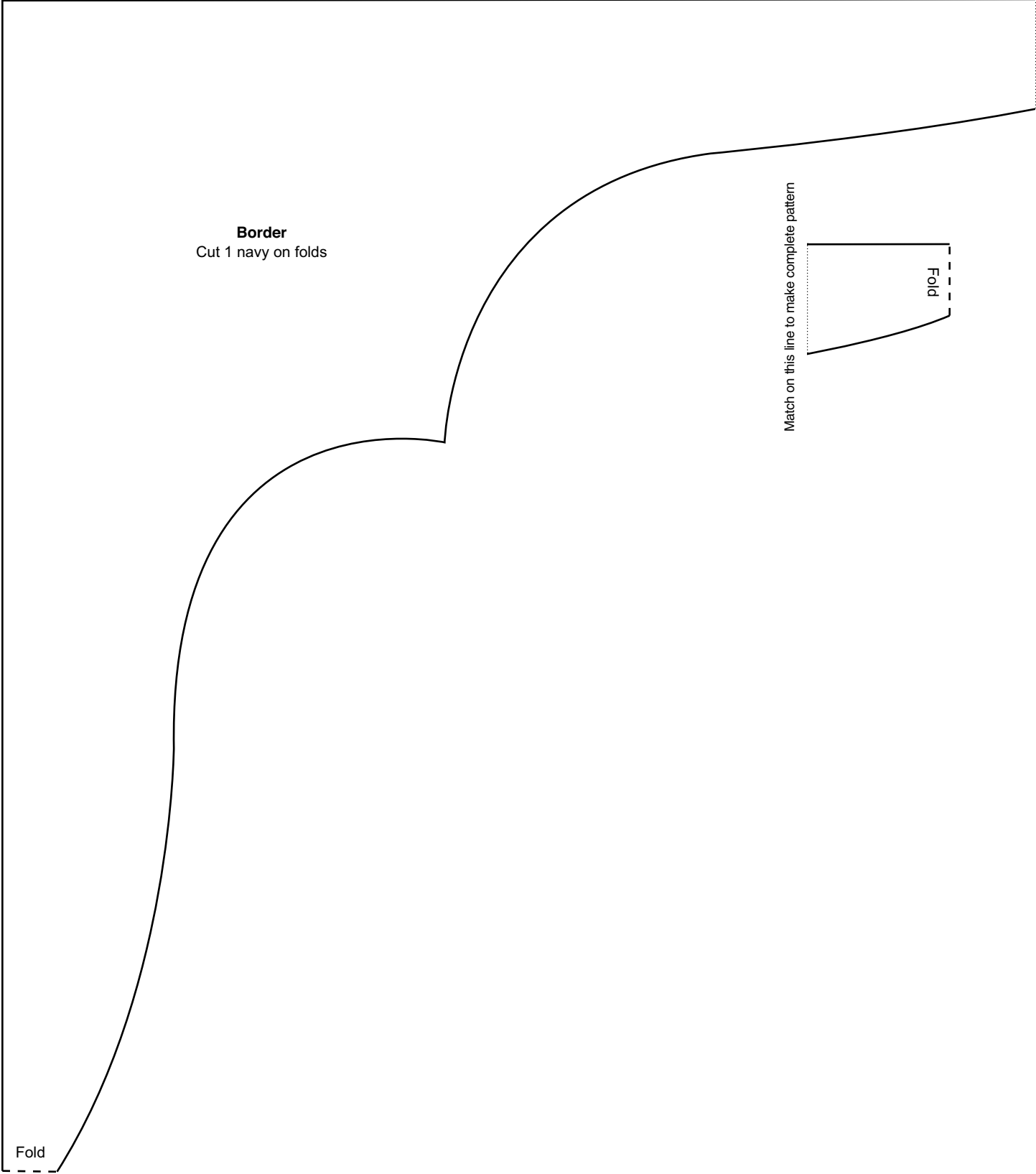
of the appliquéd center. Hand-appliqué in place. Cut away the excess white fabric behind the navy border.

8. Cut four borders from border stripe print. The width will be determined by the width of the stripes (be sure to add $\frac{1}{4}$ " to each side for seam allowance). The length should be 19" plus two times the width of the border strips plus another inch for seams and mitering.
9. Find the center of the block and the center of the border; pin. Repeat for each side. Stitch borders to block, starting and stopping $\frac{1}{4}$ " from ends of block.
10. Miter corners, carefully matching the border stripes.
11. Prepare for quilting as in General Instructions. Machine-quilt around all the appliquéd shapes, in the ditch along border stripes, and elsewhere as desired with clear nylon monofilament in the needle and all-purpose thread in the bobbin. Hand-quilt marked corners.
12. Bind the mat with self-made or purchased navy binding. ❖



Stained Glass Flowers
Placement Diagram
21" x 21"





Fold

Border
Cut 1 navy on folds

Match on this line to make complete pattern

Fold

Match on this line to make complete pattern

General Instructions

Instructions for almost all of the patterns in this book refer to fusible appliqué. Only a few patterns suggest hand appliqué. If hand appliqué is your favorite method to use for all patterns, you will need to trace the appliqué shapes and make templates. Remember to add $\frac{1}{8}$ "– $\frac{1}{4}$ " seam allowance when you cut out the shapes. No seam allowance has been added to the patterns

Fusible Appliqué

1. Trace pattern pieces in reverse on the paper side of the fusible web, referring to pattern for the number to trace.
2. Cut out shapes leaving roughly $\frac{1}{4}$ " margin around them.
3. Fuse shapes to the wrong side of the fabric as directed on each piece for color; cut out shapes on traced line. Remove the paper backing.
4. Using drawings provided with each project, arrange the appliqué shapes on the background, working from the pieces farthest in back and ascending to the foreground. Fuse in place with a medium-hot iron.
5. Cut a piece of fabric stabilizer to fit under the appliqué area or areas. Pin to the wrong side of the background fabric.
6. Using machine-embroidery thread to match the fabrics (or as directed on the patterns) in the needle and matching all-purpose thread in the bobbin, and a medium-width machine satin stitch, machine-appliqué around the pieces.
7. Remove the fabric stabilizer when all stitching is complete, referring to the manufacturer's instructions.

Marking

1. Mark any quilting designs desired before the mat is layered with backing and batting. A sharp, medium-lead pencil may be used on light background fabrics. Test the pencil marks to be sure they will wash out when quilting is complete, or be sure that your quilting stitches cover the line. Mechanical pencils with very fine points may also be used successfully to mark quilts.

2. Whatever marking tool you use should never show on the finished quilt.
3. Most of the designs in this book are quilted in the ditch or around appliqué shapes and will require no marking.

Layering

1. Backing fabric and batting are usually cut slightly larger than the quilt top. The Fabric & Batting list will give suggested sizes for each project.
2. Place the backing wrong side up on a flat work surface. Place the batting on the backing and smooth it carefully. Place the pieced top on the batting and smooth again.
3. To hold the layers together for quilting, baste by hand or use safety pins. Safety pins work especially well for machine quilting.
4. Quilting may be done by hand or by machine in the design of your choice.

Binding

1. If the project requires binding to finish, trim the backing and batting layers flush with the top of the candle mat.
2. Double-fold, straight-grain binding may be successfully used on most of the small projects in this book.
3. Cut the selected fabric in 2"-wide strips on the straight grain of the fabric. Join the strips as shown in Figure 1 to make binding of sufficient length.

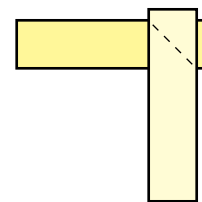


Figure 1
Join binding strips in a diagonal seam as shown.

4. Fold the binding lengthwise, wrong sides facing, and press.
5. Several quilts in this book have curved edges and

bias binding is recommended. Make the binding the same as above, but cut the 2"-wide strips on the bias instead of on the straight grain.

6. Pin the folded binding along one edge of the quilt, starting in the middle of one side and aligning the raw edges. Stitch, with a walking foot if you have one, to within $\frac{1}{4}$ " of the first corner; backstitch.
7. Turn the quilt; fold the binding at a 45-degree angle up and away from the quilt as shown in Figure 2. Fold the binding back down, flush with the raw edge of the quilt as shown in Figure 3. Repeat at each corner as you stitch around the quilt.
8. As you approach the beginning of the binding strip, stop stitching and overlap the binding $\frac{1}{2}$ " from the edge; trim. Join the two ends with a $\frac{1}{4}$ " seam allowance and press the seam open.

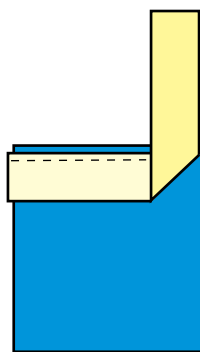


Figure 2

Fold binding at a 45-degree angle up and away from quilt.

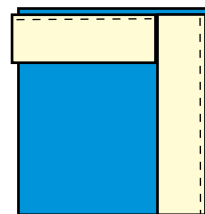


Figure 3

Fold binding back down flush with raw edge of quilt.

Reposition the joined binding along the edge of the quilt and resume stitching to the beginning.

9. To finish, bring the folded edge of the binding over the raw edges of the quilt and blind-stitch the folded edge of the binding in place over the machine-stitching line of the backside. ❖