

# Little Lily Pond

Designed by flaurie & finch  
Featuring the Blossom Batiks Splash collection



Finished quilt measures 30" x 38"

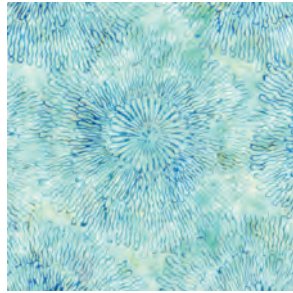
Note: This quilt is a digital representation. Your finished quilt may vary slightly.

Little Lily Pond Color Card  
Blossom Batiks Splash by flaurie & finch

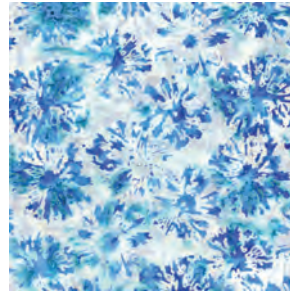
Fabric A  
#3506\_001



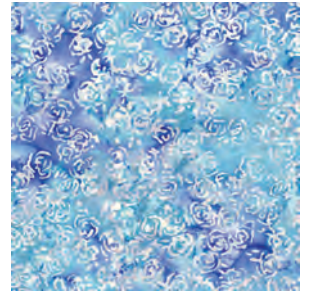
Fabric B  
#3504\_001



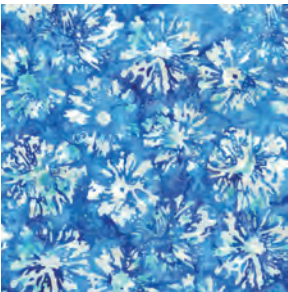
Fabric C  
#3506\_002



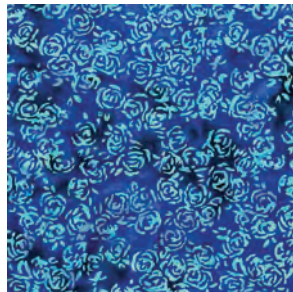
Fabric D  
#3507\_002



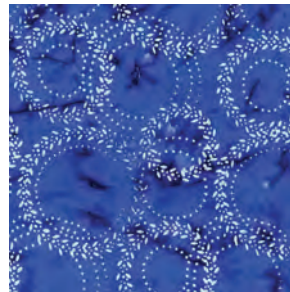
Fabric E  
#3506\_003



Fabric F  
#3507\_003



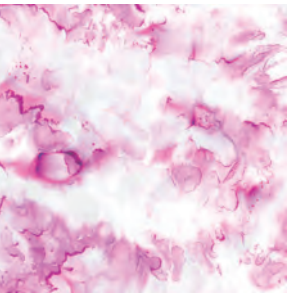
Fabric G  
#3505\_001



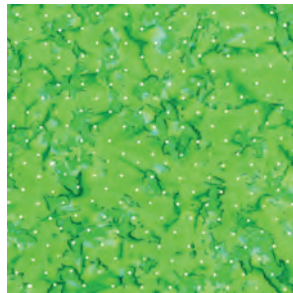
Fabric H  
#3503\_001



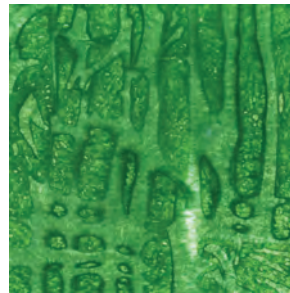
Fabric I  
#2930\_019



Fabric J  
#3137\_007



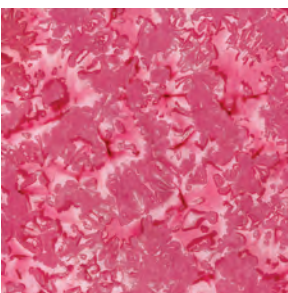
Fabric K  
#3508\_001



Fabric L  
#3506\_007



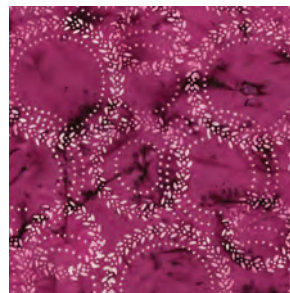
Fabric M  
#2930\_021



Fabric N  
#3506\_005



Fabric O  
#3505\_004



## Yardage Requirements

*(Blossom Batiks Splash)*

Fat Eighth each:

Fabric M: 2930-021

Fabric N: 3506-005

Fabric O: 3505-004

1/4 yard each:

Fabric A: 3506-001

Fabric B: 3504-001

Fabric C: 3506-002

Fabric D: 3507-002

Fabric F: 3507-003

Fabric G: 3505-001

Fat Quarter each:

Fabric J: 3137-007

Fabric K: 3508-001

3/8 yard Fabric L: 3506-007

1/2 yard each:

Fabric E: 3506-003

Fabric I: 2930-019

1-1/2 yards Fabric H: 3503-001

1-1/4 yards backing fabric

36" x 44" piece of batting

Fusible web

Basic sewing supplies

## Cutting and Preparation

**From Fabric A, cut:**

Six 5" squares, then cut diagonally in half once

**From Fabric B, cut:**

Four 5" squares, then cut diagonally in half once

**From Fabric C, cut:**

Four 5" squares, then cut diagonally in half once

**From Fabric D, cut:**

Four 5" squares, then cut diagonally in half once

**From Fabric E, cut:**

Ten 5" squares, then cut diagonally in half once

**From Fabric F, cut:**

Seven 5" squares, then cut diagonally in half once

**From Fabric G, cut:**

Eight 5" squares, then cut diagonally in half once

**From Fabric H, cut:**

Five 5" squares, then cut diagonally in half once

Four 2-1/2" x WOF strips for outer border

Four 2-1/4" x WOF strips for binding

**From Fabric I, cut:**

Four 1-1/2" x WOF strips for inner border

**Applique:**

To prepare applique pieces, trace one of each template onto the paper side of fusible web (some shapes are combined into one piece). Cut out 1/4" past the drawn lines and fuse onto the indicated fabric. Cut out shapes on the drawn lines.

**Make the Blocks:**

1. Sew (1) A triangle and (1) B triangle together along the long edge to make a half-square triangle block. Square to measure 4-1/2". Make three A/B blocks.  
2. In the same manner, make the indicated number of blocks in each combination:

A/C: 2	C/E: 1
A/D: 3	D/G: 1
A/E: 3	E/F: 6
A/H: 1	E/G: 6
B/C: 2	E/H: 2
B/D: 1	F/G: 5
B/E: 2	F/H: 3
C/D: 3	G/H: 4

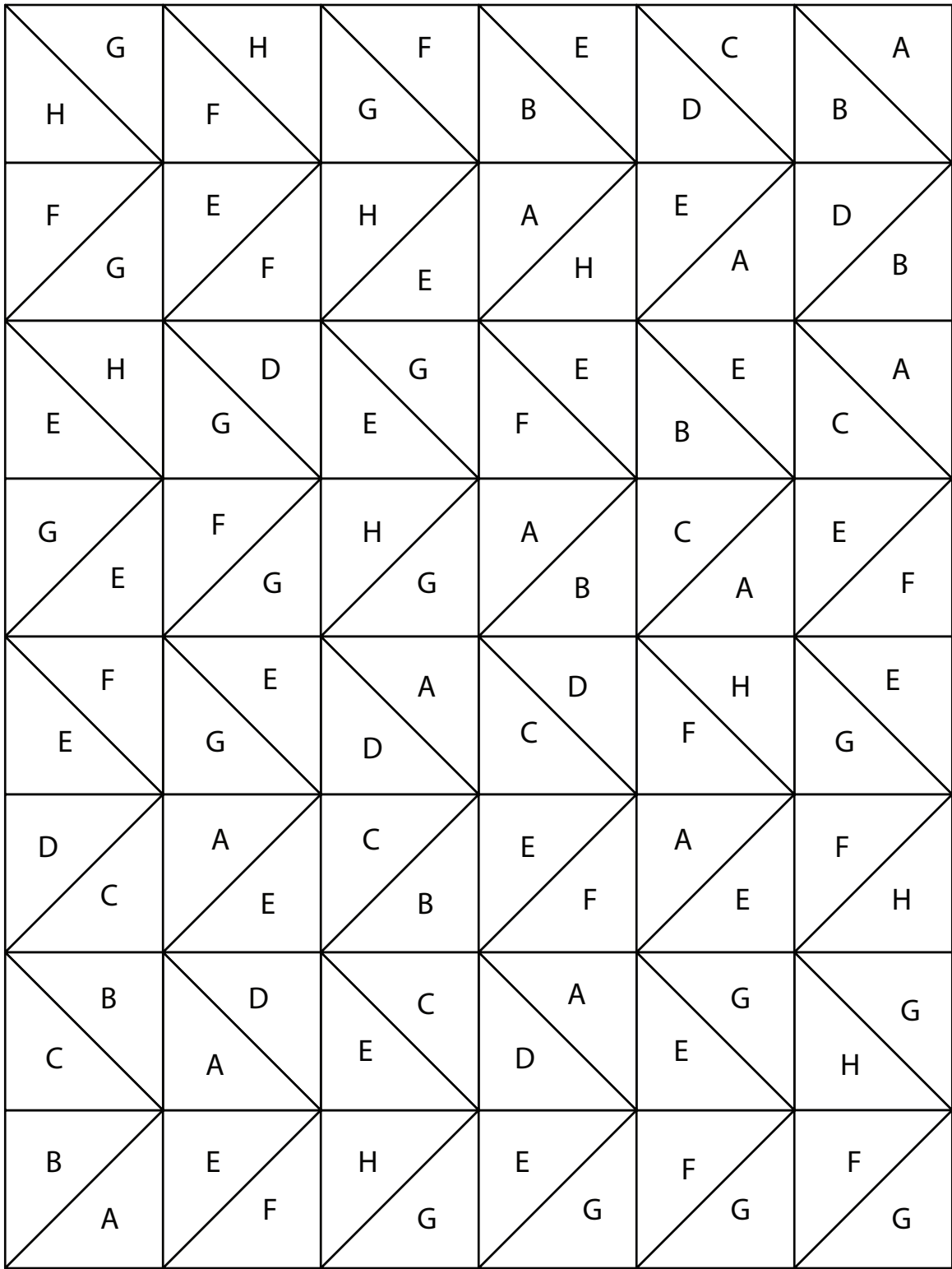
**Assemble the Quilt:**

1. Referring to the Pieced Background Layout Diagram on p. 3, lay out the forty-eight blocks in eight rows of six blocks each, noting orientation of each block.  
2. Sew the blocks into rows and join the rows to complete the pieced quilt background.  
3. Referring to the Placement Diagram on p. 4, position the petals on the H flower background piece and fuse in place following manufacturer's directions. Fuse assembled flower to pieced background. Use a decorative stitch to secure applique pieces.  
4. Measure the quilt lengthwise and trim two 1" l strips to that length. Sew to the sides of the quilt. Measure the quilt widthwise, including the border just added, and trim two 1" l strips to that length. Sew to the top and bottom of the quilt.  
5. In the same way, add the 2-1/2" H strips for the outer border.

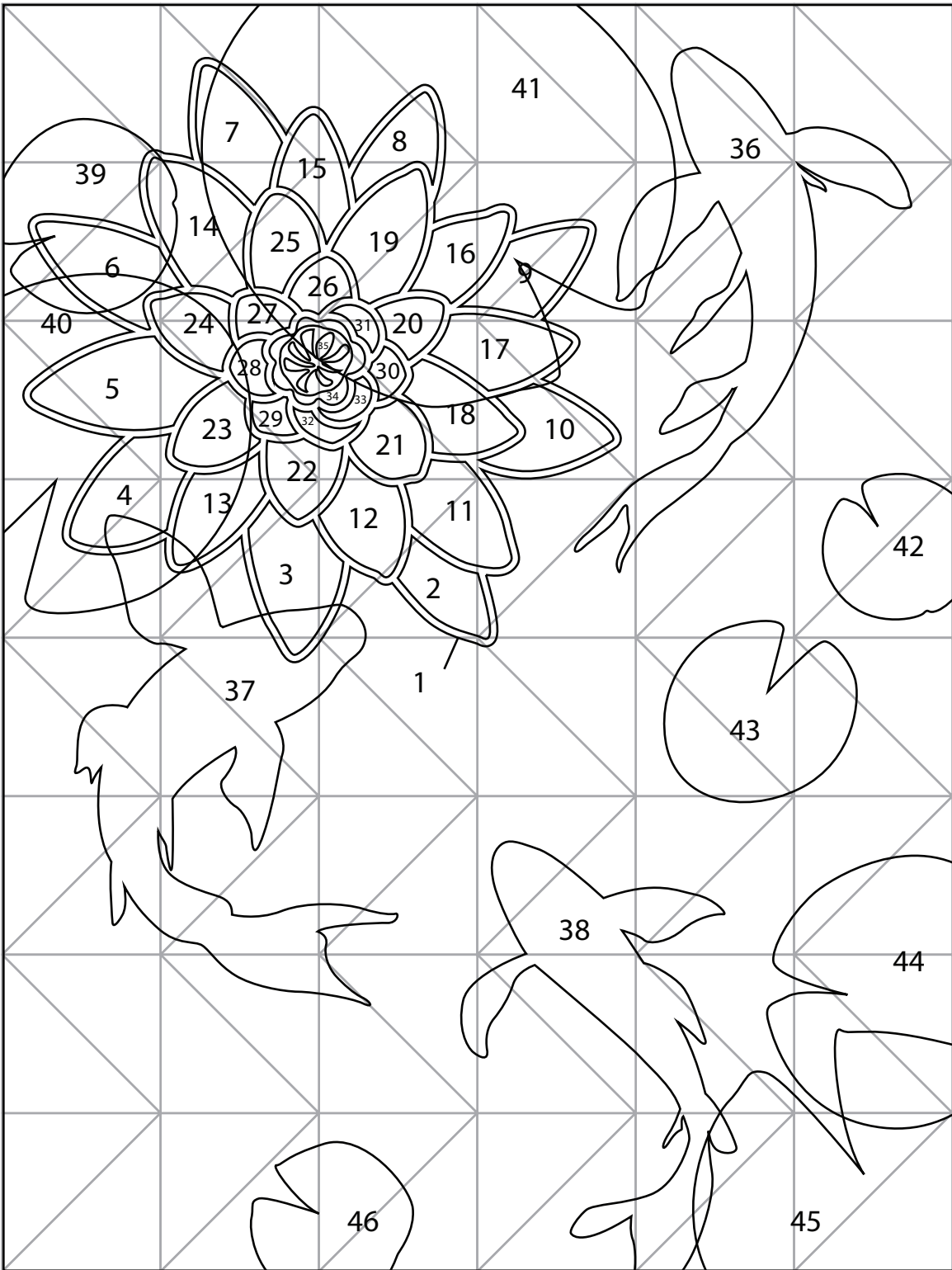
**Finishing**

Lay the backing right side down, batting, and quilt top right side up. Baste the layers together and quilt as desired. Use the four 2-1/4" x WOF Fabric H strips to bind the quilt.

### Pieced Background Layout Diagram



# Applique Placement Diagram

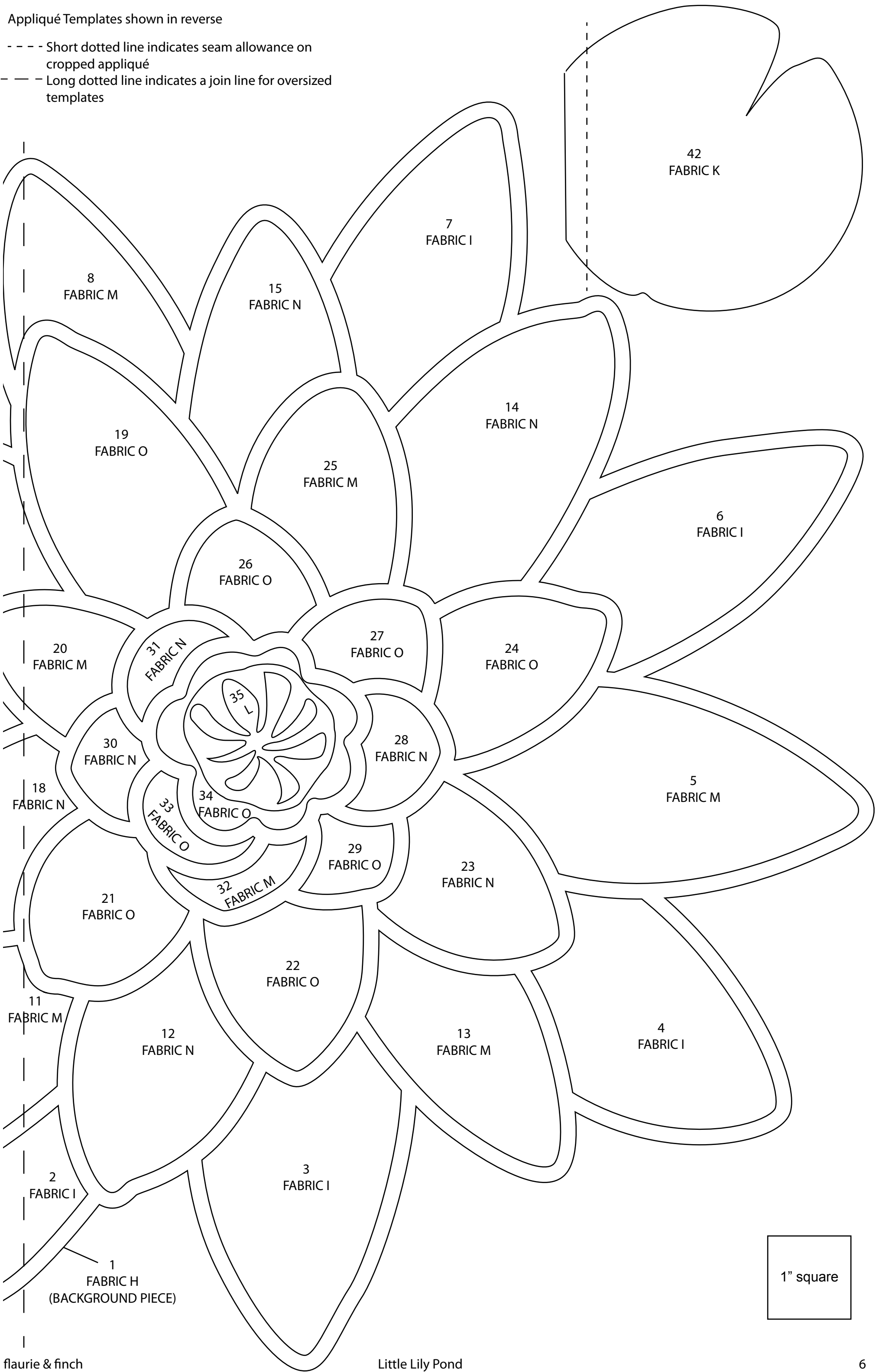


# Quilt Layout Diagram

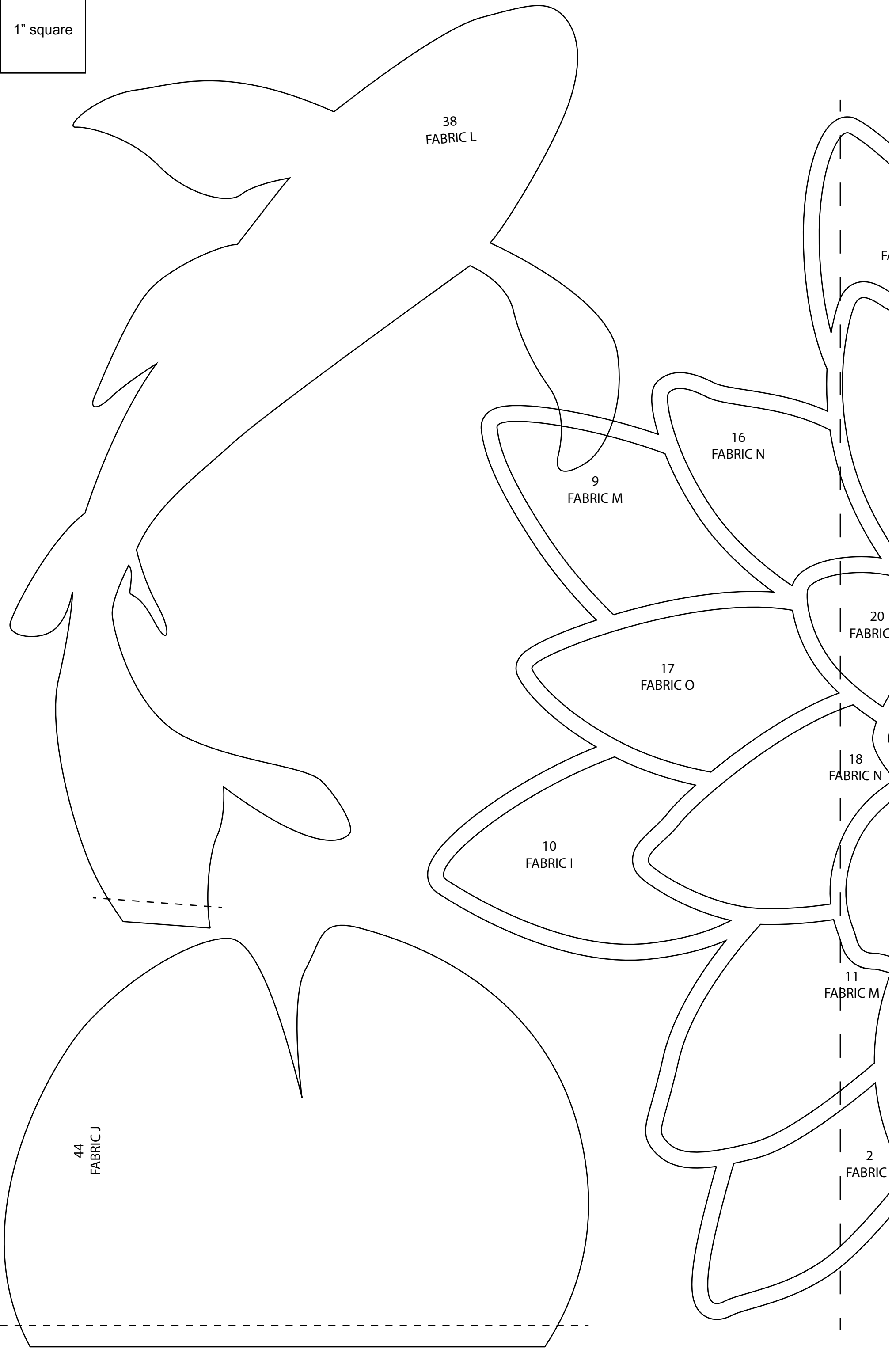


Appliqué Templates shown in reverse

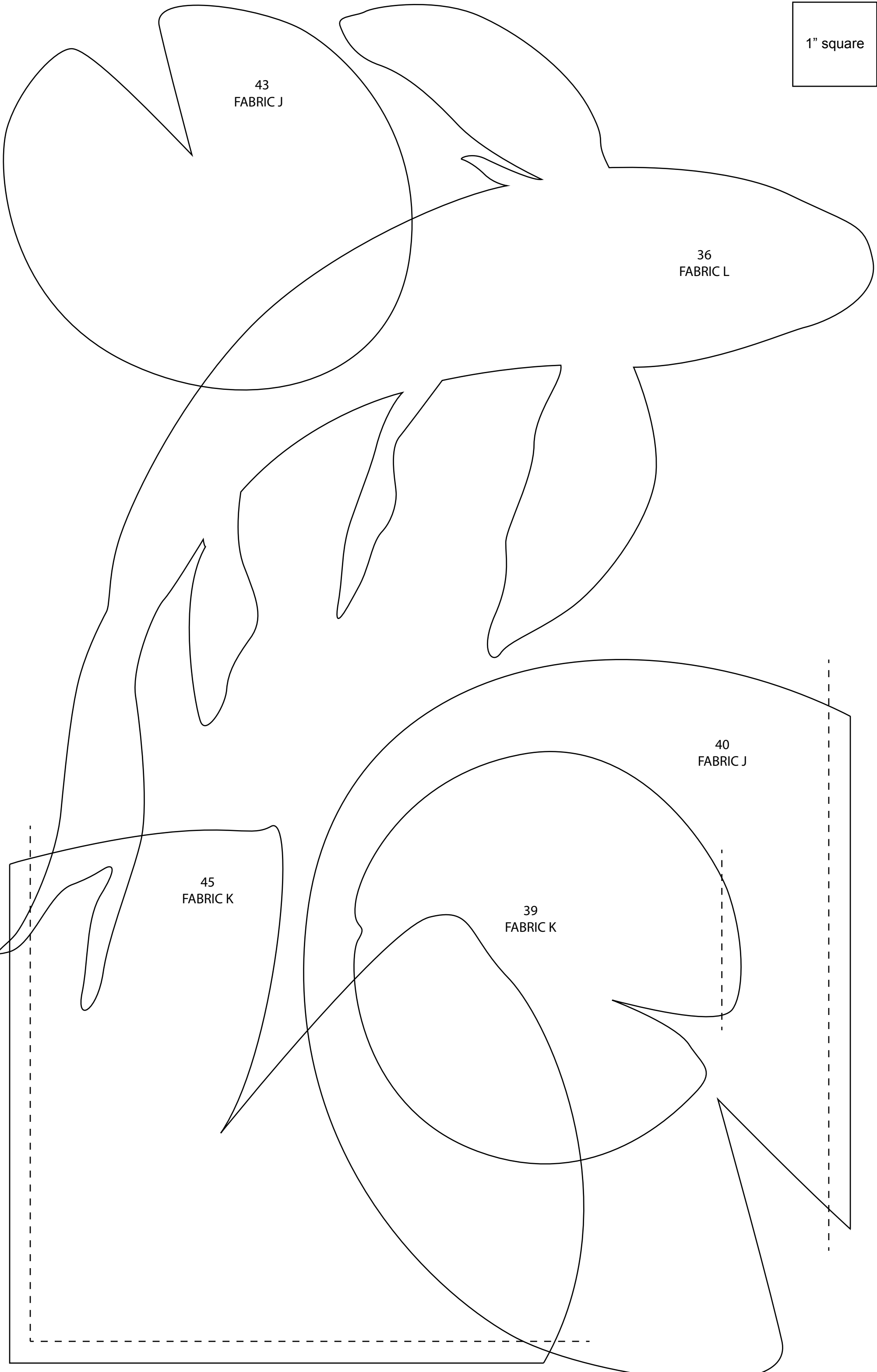
- - - - Short dotted line indicates seam allowance on cropped appliqué
- . - . Long dotted line indicates a join line for oversized templates



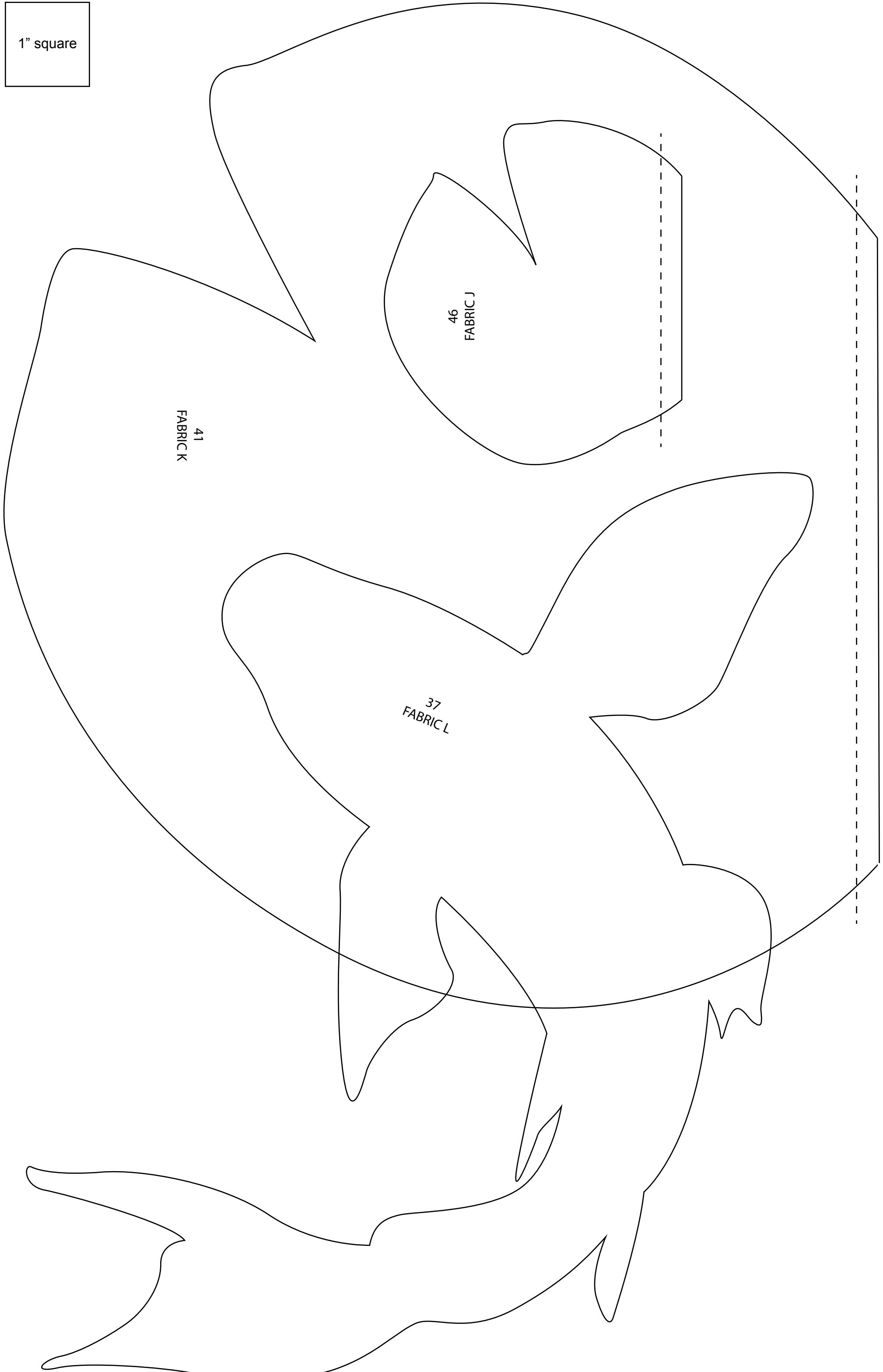
1" square



1" square



1" square



41  
FABRIC K

46  
FABRIC J

37  
FABRIC L